

User Manual

PPD-1000

Full Flat Touch Screen LCD Monitor



Version 1.3

© Copyright Fametech Inc. (TYSSO), 2017

General Information

ABOUT THIS MANUAL

The purpose of this user's manual is to provide general information on TYSSO PPD Series POS monitor and to show the users how to configure the hardware-related configurations. The information in this manual is subject to change without notice due to rapid improvement on IT technology.

The users can get the most up to date information from our web site:

<http://www.fametechnology.com.tw>

WARNING

The terminal has been tested and found to comply with the limits for a Class A digital device, pursuant to Part 15 of the FCC rules. These limits are designed to provide reasonable protection against harmful interference in a residential installation. This equipment can generate and radiate radio frequency energy and, if not installed and used according to the instructions, may cause harmful interference to radio communications. However, there is no guarantee that interference will not occur under particular installation. If this equipment does cause harmful interference to radio or television reception, which is found by turning the equipment off and on, the user is encouraged to try to correct the interference by one or more of the following measures:

- Reorient or relocate the receiving antenna
- Increase the distance between the equipment or device
- Connect the equipment to an outlet other than the receiver's
- Consult a dealer or an experienced radio/TV technician for assistance



WARRANTY LIMITS

If the PPD series machine is disassembled by any person other than the authorized technicians, the warranty will be terminated. The users should consult his/her dealer for any technical problems. Warranty does not cover any damage caused by improper use.

TRADE MARKS AND SERVICE MARKS

TYSSO is a registered trademark of FAMETECH INC.

Other brand and product names are trademarks and registered trademarks and service marks of their respective owners.

IMPORTANT SAFETY INFORMATION

- Read all these instructions carefully.
- Use only parts, especially power adapter, recommended by the manufacturer; unapproved parts may be hazardous.
- Before plugging the power cord into the AC inlet of the power supply unit, make sure that the voltage applied to the power outlet is within the specified range (100V ~240V). Improper power source voltage range will cause damage to the power supply unit.
- Power off the PPD and remove the power adapter while cleaning the monitor.
- Keep the PPDs away from water, direct sunlight, a heating or a radiator.
- Do not place the PPD on an unstable cart, stand or table. If the machine falls, it may injure people or cause serious damage to the appliance.
- The PPD is equipped with a three-wire grounded plug with a third (grounding) pin. This is a safety feature. If your outlet does not accommodate the three-wire plug, have an electrician install a correct outlet, or use an adapter to ground the appliance safely. Do not leave out the safety purpose of the grounded plug.
- Do not allow anything to rest on the power cord. Do not locate the system where people may walk on the cord.
- Do not make the power outlet and extension cords overload. Overload can result in fire or electric shock.
- Do not push any object into the monitor cabinet. Dangerous voltage points may be touched and the parts may be shorted out resulting in fire or electric shock.
- Do not attempt to service the PPD on your own. Opening or removing cover can expose you to dangerous voltage or other hazards.
- Power off the monitor before installing or removing non-PNP (plug and play) devices.
- If any of the following situations occurs, unplug the PPD from the power outlet immediately and consult with a qualified service person:
 1. The power cord or plug is damaged or frayed.
 2. Liquid is spilled into the PPD.
 3. The PPDs are dropped or the cabinet is damaged.
- When the PPD is not in use, cover the PPD and store it with care.

Contents

General Information	i
ABOUT THIS MANUAL	i
WARNING	i
WARRANTY LIMITS	i
TRADE MARKS AND SERVICE MARKS.....	ii
IMPORTANT SAFETY INFORMATION	ii
1. Introduction	3
1.1 Unpacking.....	3
1.2 Product Overview	4
1.3 I/O Ports and Connectors	7
1.4 Specifications	8
2. Install Your Monitor	9
3. Monitor Setting	10
3.1 OSD Control Panel	10
3.2 On-Screen Display	11
4. Install the Touch Screen Driver	12
4.1 Resistive Type Touch Panel.....	13
4.1.1 Install the Driver of Resistive Type Touch Panel	13
4.1.2 Touch Screen Calibration (Resistive Type)	18
4.2 Projective Capacitive Type Touch Panel.....	21
4.2.1 Install the Driver of Projective Capacitive Type Touch Panel	21
4.2.2 Touch Screen Utility	24
Appendix: Install the MSR Module (Optional).....	27

1. Introduction

The PPD-1000 is a compact and full-flat touch screen monitor that comes with a die-casting metal back cover. Multiple interfaces with the compact base design enable desirable connectivity and easy to use.

Within the 15-inch full-flat and high brightness vivid LCD panel, PPD-1000 supports 5-Wire Resistive or Projective Capacitive Touch technology to ensure every touch can respond immediately to the command without any loss.

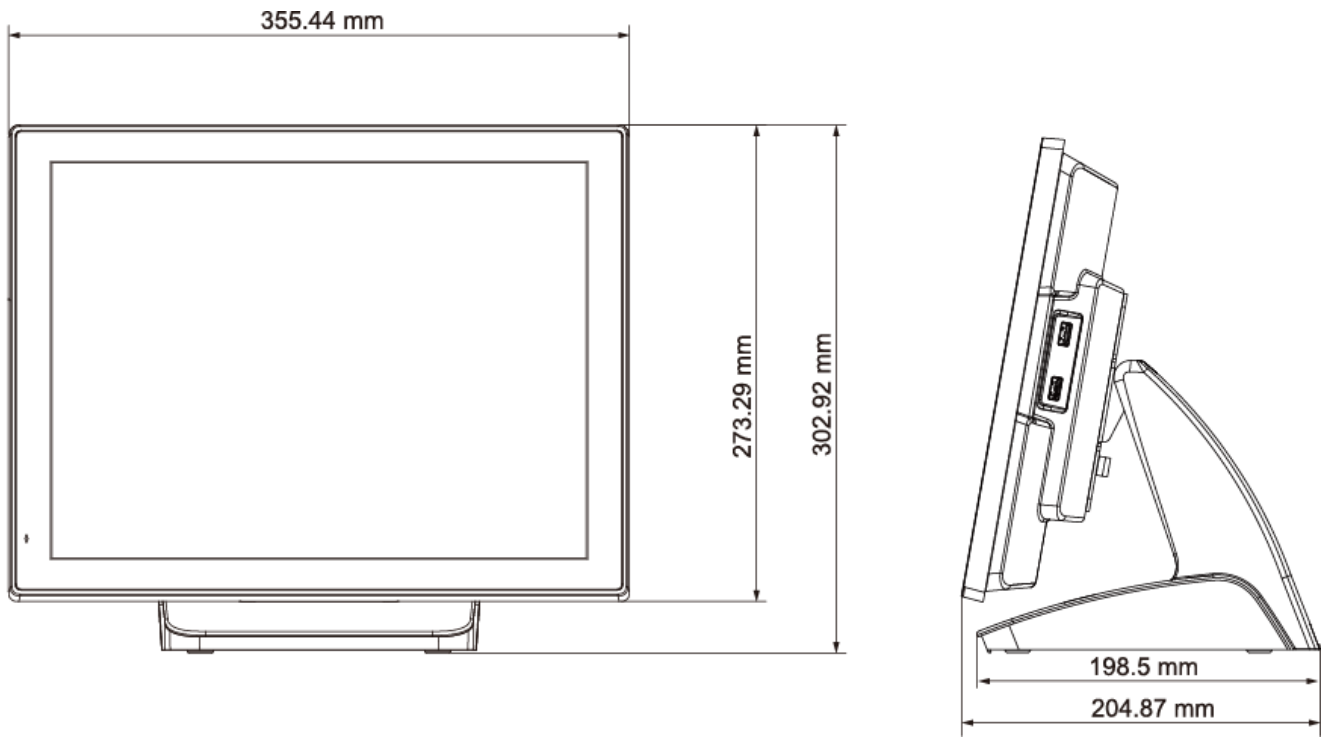
1.1 Unpacking

The contents may vary with different options. If there's any physical damage or missing parts, please contact your supplier immediately. Please keep all packing materials in case you need to ship back the device for service.

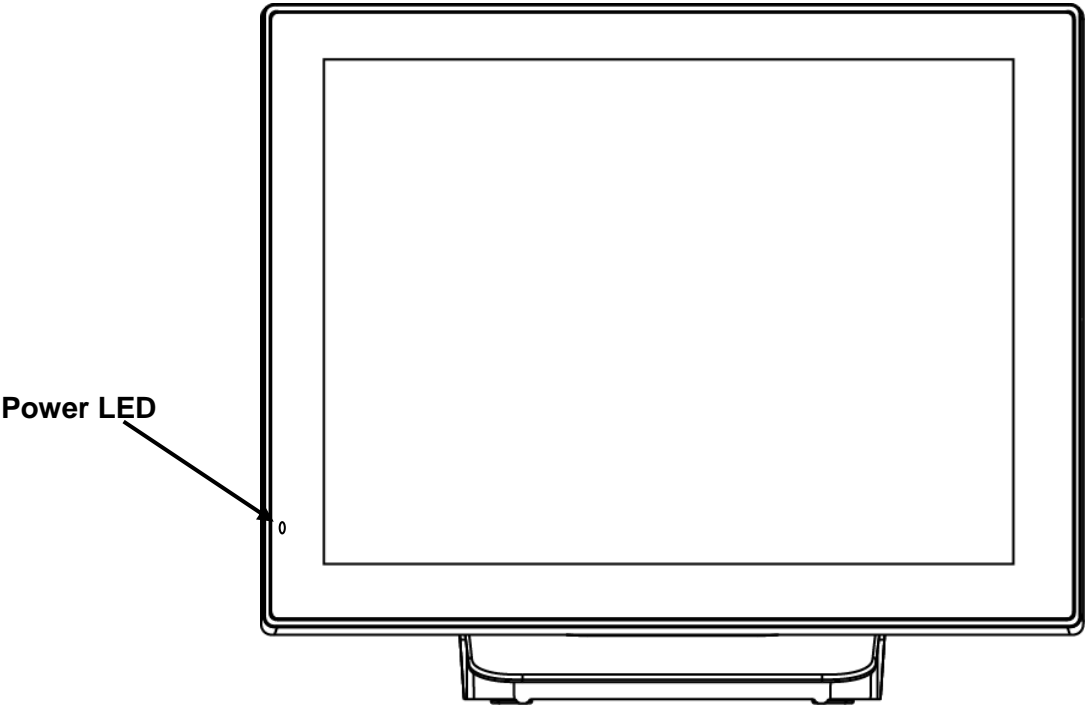
- Monitor: 15" (Internal Speakers, 2W x 1)
- Base Stand (with cable-routing hooks)
- VGA Cable
- AC Power Cord (US, EU or UK selectable)
- Power Adaptor
- Driver and Utility CD
- USB Touch Cable (available for touch screen type only)

1.2 Product Overview

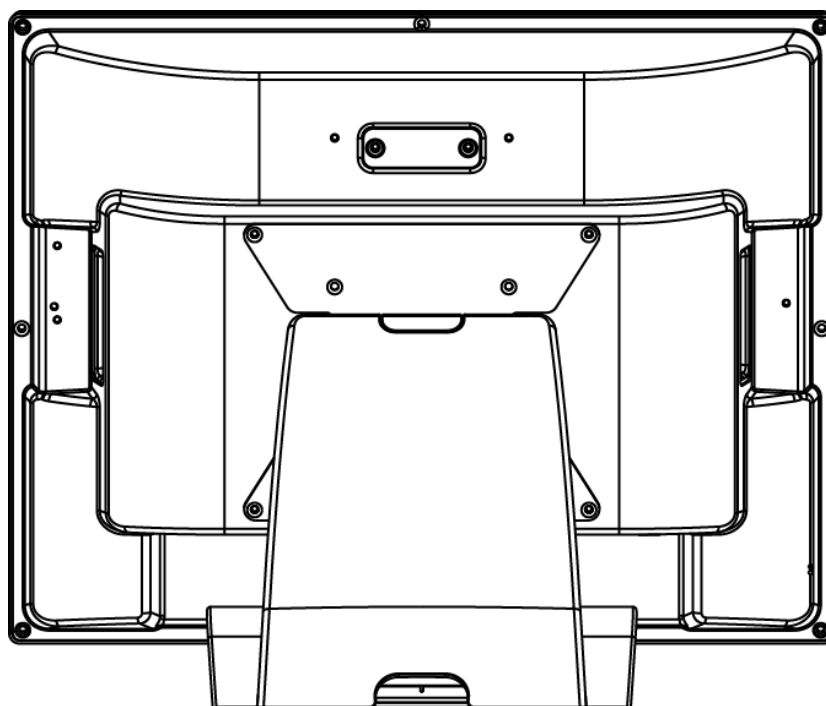
- Dimensions



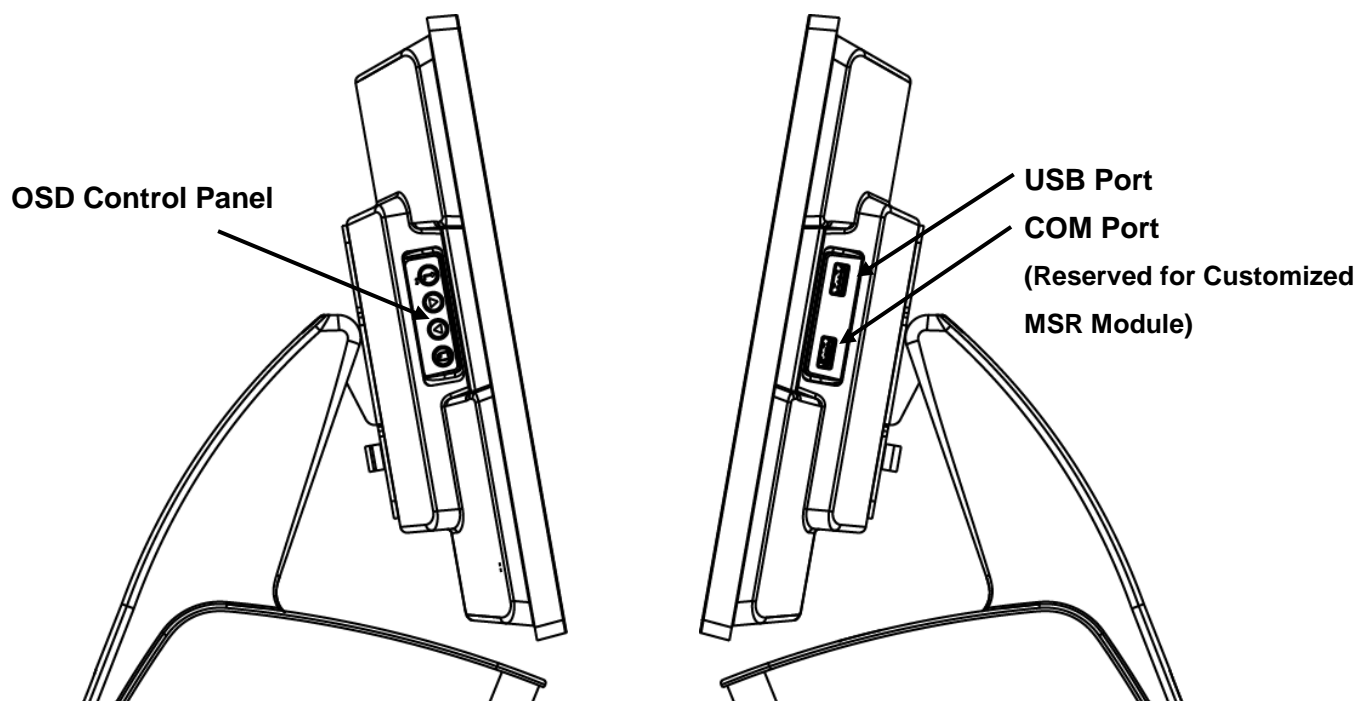
- Front View



- **Rear View**



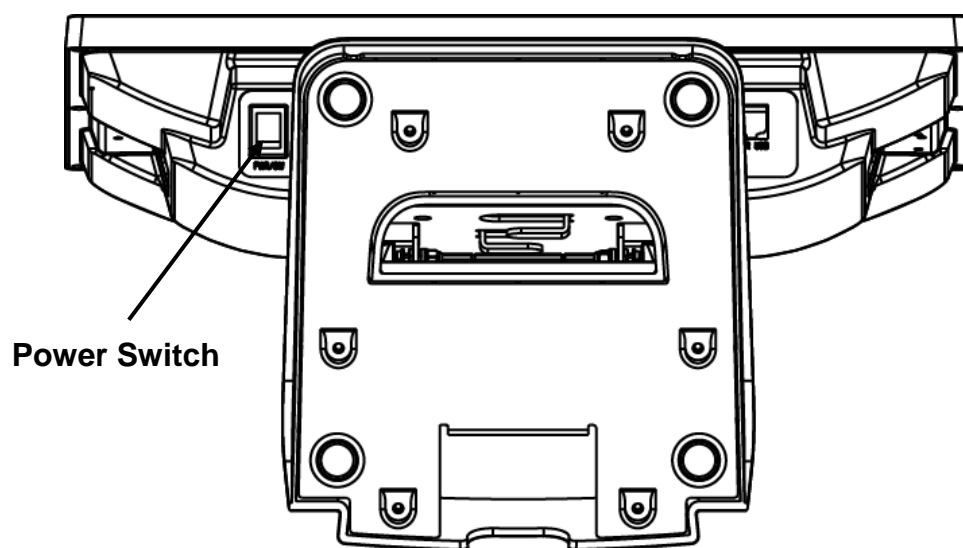
- **Side View**



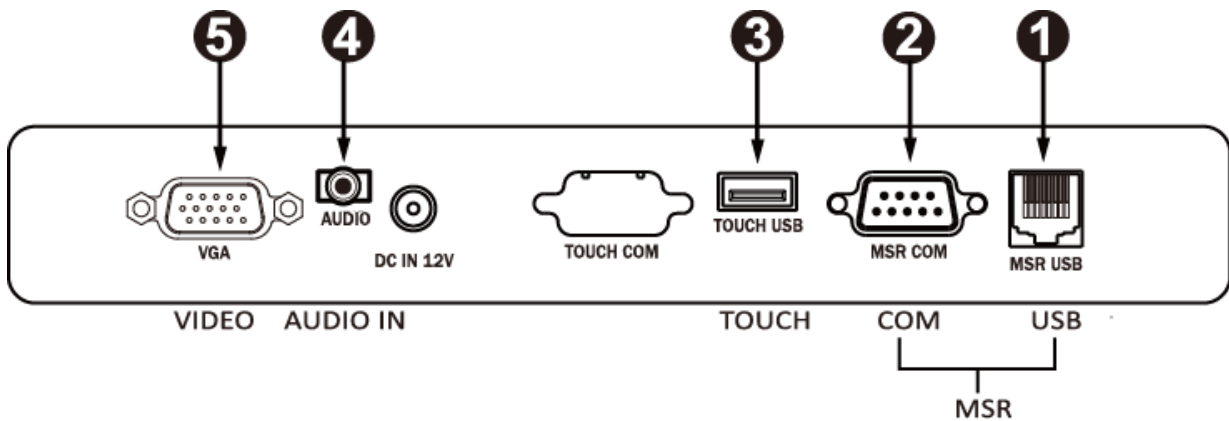
Note:






The Side USB/COM Port is reserved for customized MSR module installation.
Please consult the technical personnel before installation

- **Bottom View**



1.3 I/O Ports and Connectors



- A. **1** →  → To PC USB Port
- B. **2** →  → To PC COM Port
- C. **3** →  → To PC USB Port
- D. **4** →  → To PC Audio-in
- E. **5** →  → To PC VGA Port

A.	USB interface MSR cable (*optional)
B.	RS-232 interface MSR cable (*optional)
C.	USB interface touch cable (** touch screen only)
D.	Audio cable (*optional)
E.	VGA cable

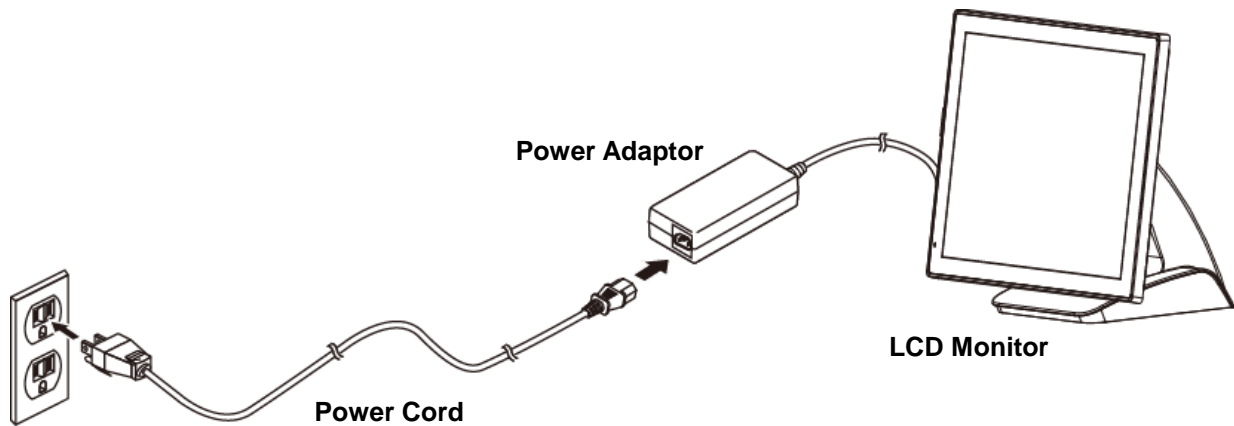
* Optional accessories (MSR, external speakers and cables) are purchased separately and please contact local representative for further information.

** Touch Screen cable (USB) is included for Touch Screen Version ONLY.

1.4 Specifications

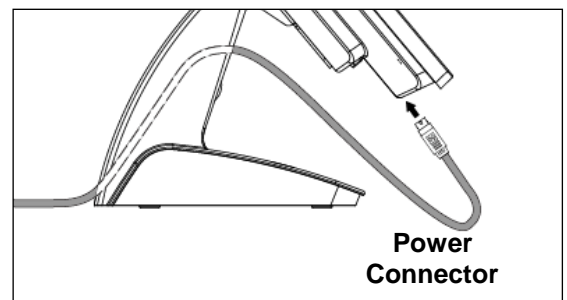
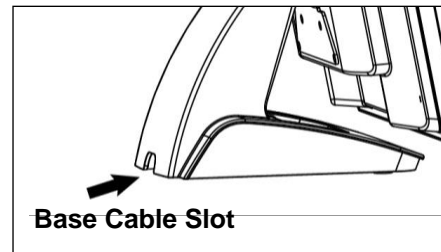
Model	PPD-1000
Display Size	15"
Brightness	300 nits
Resolution	1024 x 768 Pixel
Touch Screen	5-Wire Resistive Type or Projective Capacitive
Tilting Angle	15~85 Degrees
I/O Ports	
Serial	RS-232 DB-9 (reserved for MSR)
USB	USB 2.0 for touch panel
RJ-45	USB Optional for MSR
VGA	DB-15, Female, Support up to XGA /SXGA at 75Hz
Audio In	1x Audio Jack with 1 x Internal Speaker 2W
Others	
VESA	75mm
Power Input	12VDC/3.0A (power adaptor 100VAC~240VAC)
Color	Black, Silver (by custom)
Compliance	FCC / CE / WEEE / RoHS
Weight	5 Kg
Dimension (mm)	355.44 x 302.92 x 204.87
Operating Temperature	5°C~40°C
Operating Humidity	20% - 80% RH, non-condensing
Storage Temperature	-20°C~ 60°C
Storage Humidity	20% - 85% RH, non-condensing

2. Install Your Monitor



Electrical Outlet

1. Place the monitor on the proper location.
2. Pass the power connector of the power adaptor through the Base Cable Slot.
3. Connect the power adaptor to the Main Power Input (DC12V Input).
4. Plug the AC power cord to the power adaptor.
5. Plug the AC power cord to the power source (for example: electrical outlet).
6. Connect the VGA to the monitor.
7. Connect the Touch Cable to the I/O Port. (touchscreen type only)
8. Install the optional peripherals to the monitor.
9. Examine the Power Adaptor, Power Cord and should be properly connect to the monitor and Power Source.
10. Turn on the power of monitor and optional peripheral.



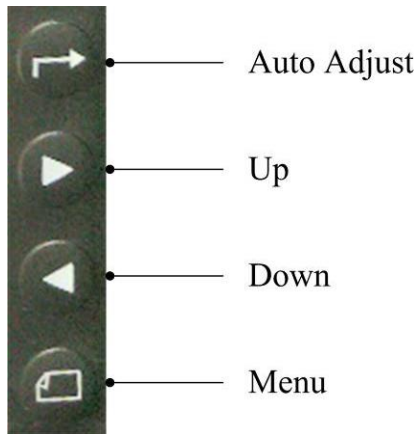
Pass the Power Connector through Base Cable Slot

Note:

- Always install the monitor, computer, and the optional peripherals on a flat, clean and stable location.
- To prevent obstruction on the operator, reserve appropriate space for the devices and remove unnecessarily objects or items.

3. Monitor Setting

3.1 OSD Control Panel



Button	Function
Auto Adjust	<ul style="list-style-type: none">a. Automatically optimize and adjust the screen settings.b. Exit the OSD menu.
Up	<ul style="list-style-type: none">a. Increase the volume.b. Increase the value of the function selected or move to the previous function as the OSD menu is active.
Down	<ul style="list-style-type: none">a. Decrease the volume.b. Decrease the value of the function selected or move to the next function.
Menu	Activate the OSD menu and enter/select the function.

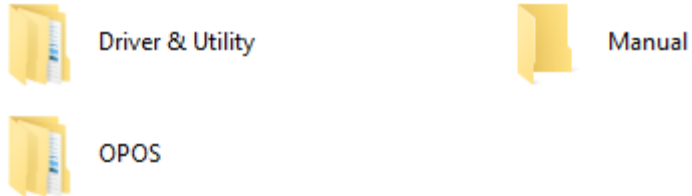
3.2 On-Screen Display

OSD Main Menu	Item	Description
Color	Auto Color	Automatically optimize and adjust the color settings.
	Contrast	Adjust the degree of difference between lightness and darkness.
	Brightness	Adjust the balance between lightness and darkness.
	Color Temp	Color Temperature Adjustment. There are 9300K/6500K/5800K/SRGB, and USER modes selectable.
	Exit	Exit to Main Menu.
Image	Auto Adjust	Automatically optimize and adjust the image settings.
	H.Position	Adjust the horizontal position of the screen image.
	V.Position	Adjust the vertical position of the screen image.
	Clock	Adjust the pixel clock frequency.
	Phase	Adjust the pixel clock signal.
	Sharpness	Adjust the clarity and visibility of the edges.
	Exit	Exit to Main Menu.
OSD	OSD H.Pos	Adjust the horizontal position of the OSD menu.
	OSD V.Pos	Adjust the vertical position of the OSD menu.
	OSD Timer	Adjust the display time of the OSD menu.
	Reset	Reset all settings to the default values.
	Language	Set the OSD menu languages. There are English, French, Germany, Spanish, Japanese, Simplified Chinese and Traditional Chinese selectable.
	Factory Mode	The function is reserved to the qualified personnel to perform detail adjustments.
	Exit	Exit to Main Menu.
Exit		Select to exit the menu.

4. Install the Touch Screen Driver

Please place the supplied disc into the CD/DVD-ROM drive.

Browse the disc and double click the folder “Driver & Utility” to access the folder.



There are categorized folders of POS Terminal, Peripherals and Touch Screen drivers (Touch Driver).

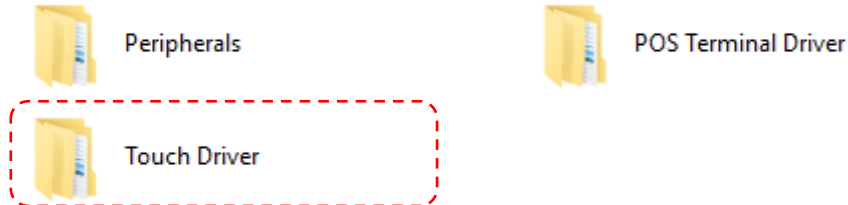


4.1 Resistive Type Touch Panel

4.1.1 Install the Driver of Resistive Type Touch Panel

To install the drivers of Resistive Touch Panel:

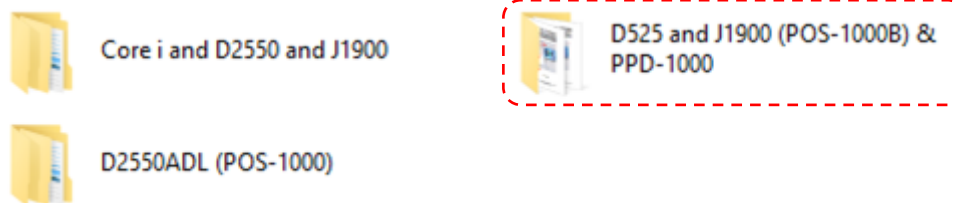
- a. Double click the folder “Touch Driver” to access the subfolder.



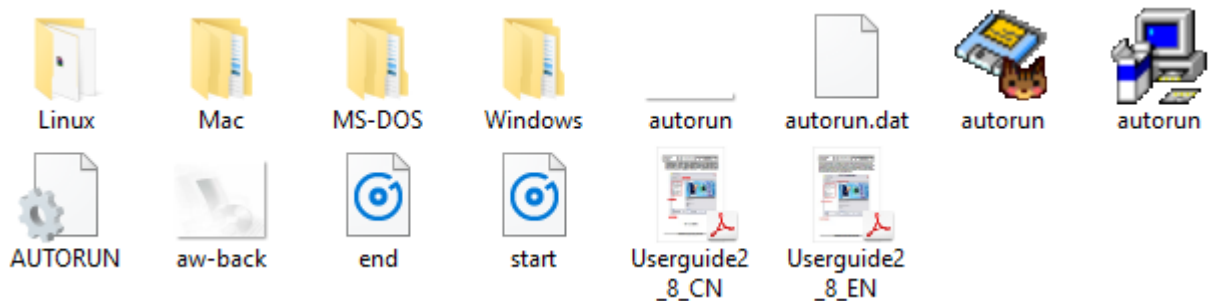
- b. There are drivers of Resistive type and Projective Capacitive type touch screen. To install the driver for Resistive type, select (double click) the folder “Resistive Touch” to start installation.



- c. Select the folder “D525 and J1900 (POS-1000B) & PPD-1000” and access the subfolders.



- d. Select the subfolder according to the operating system and prepare for installation (for example:: select “Windows” for Windows XP operating system)



- e. Select the subfolder according to the operating system installed.
(for example: select “Win 7 & Vista & XP & 2K & ME98-32bits” for the Windows XP 32-bit version)



Win 8 & 7 & Vista & XP & 2K & ME98-32bits



Win 8 & 7 & Vista & XP-64bits



Win CE

- f. Double click the file “Setup.EXE” to start the installation.



data1



data1



data2



ISSetup.dll



layout.bin



setup

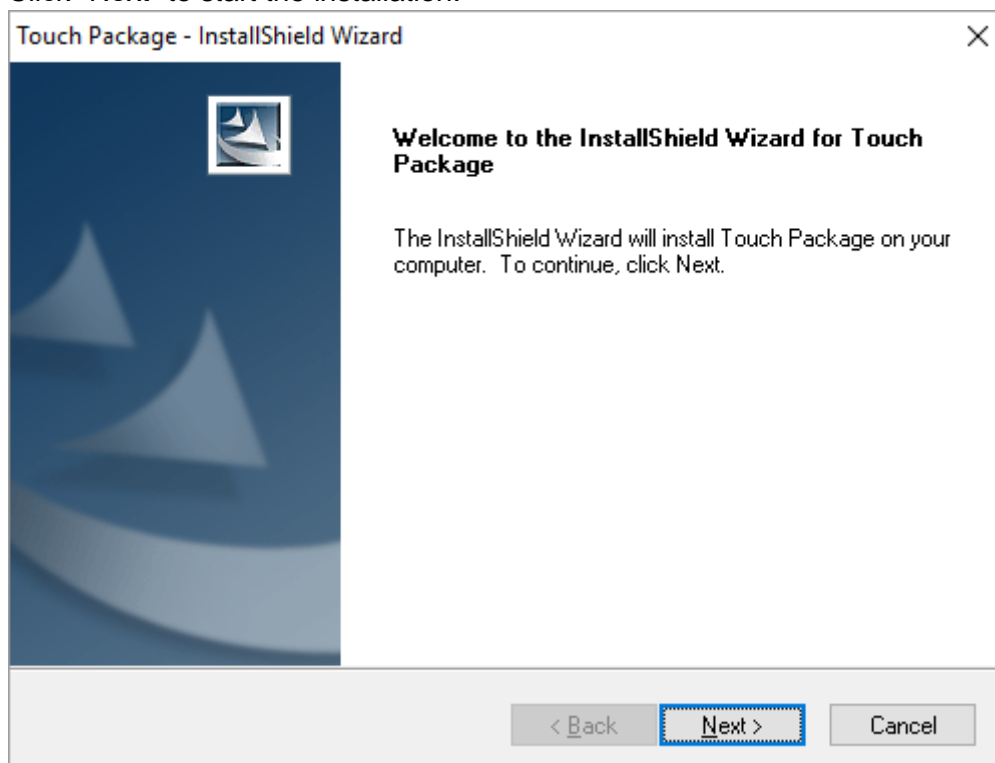


setup

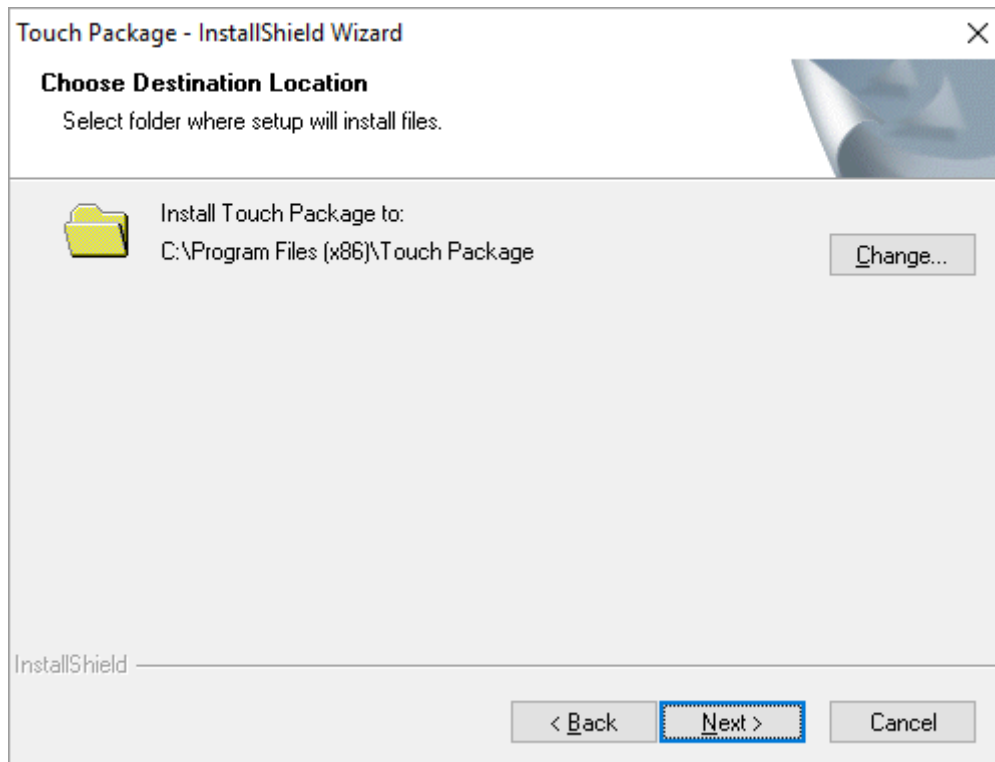


setup

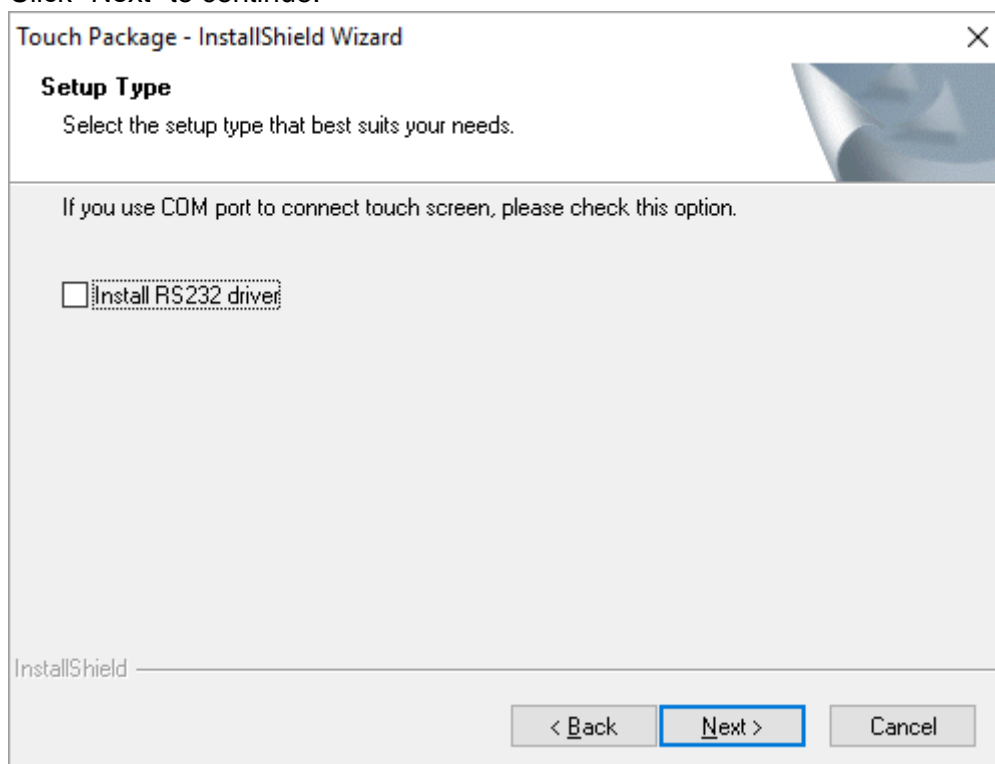
- g. Click “Next” to start the installation.



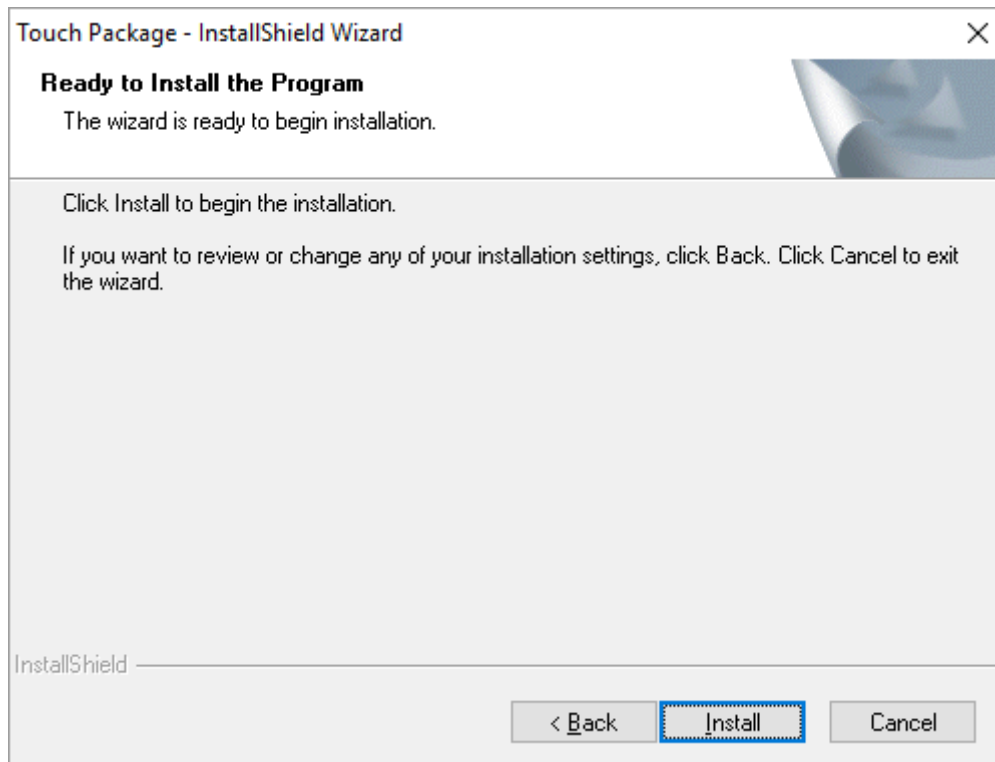
- h. Select the destination folder and click “Next” to continue.



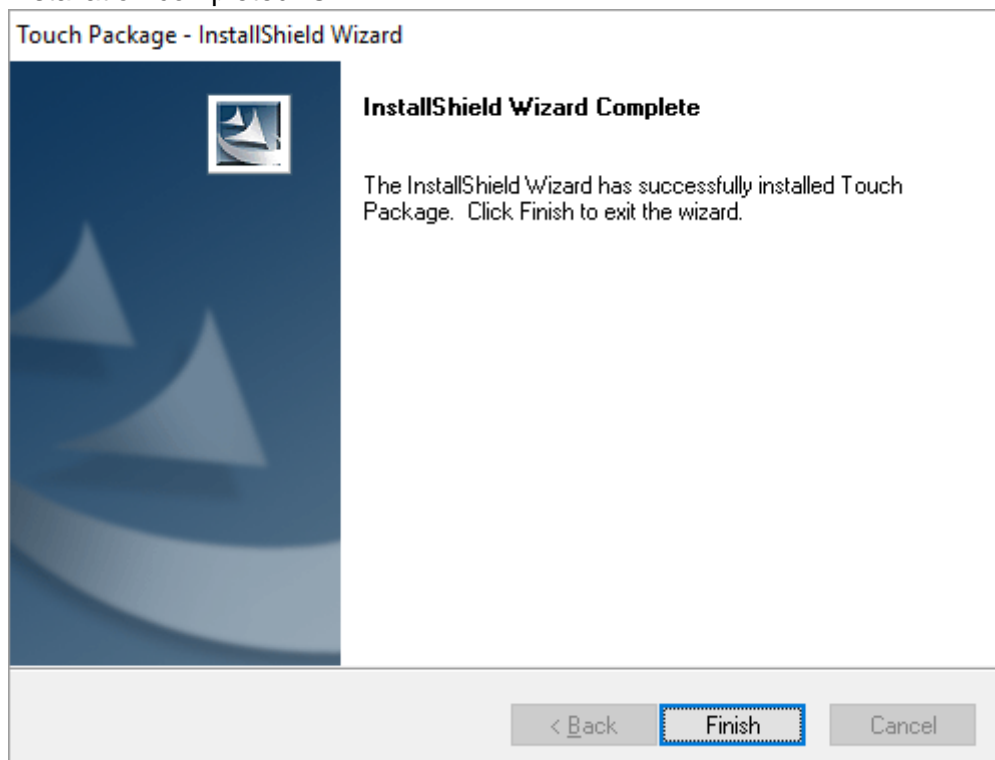
- i. COM port (RS-232) driver installation.
If the touch screen is for RS-232 interface, please click the checkbox “Install RS232 driver” additionally to install the driver.
Click “Next” to continue.



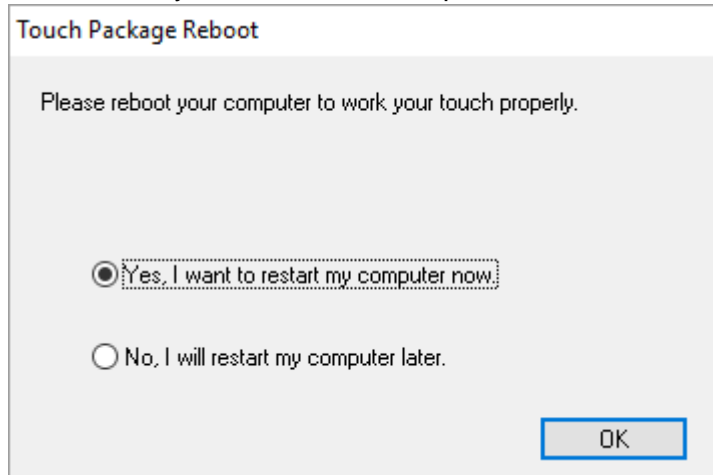
- j. Click "Install" to start the installation.



- k. Installation completed. Click "Finish" to exit.



- I. Restart the system. Click “OK” to proceed.



- m. Installation completed. There is an icon on the screen for quick launch.



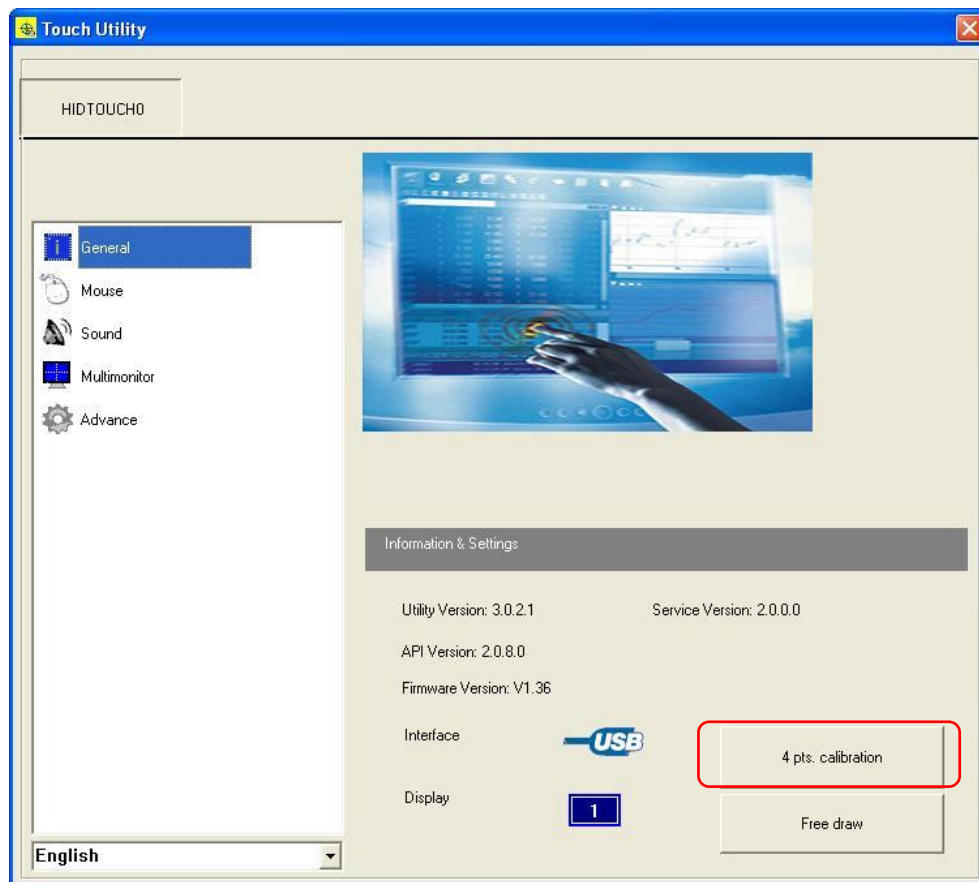
4.1.2 Touch Screen Calibration (Resistive Type)

There is a Utility “Touch Tool” for Touch Screen Calibration.

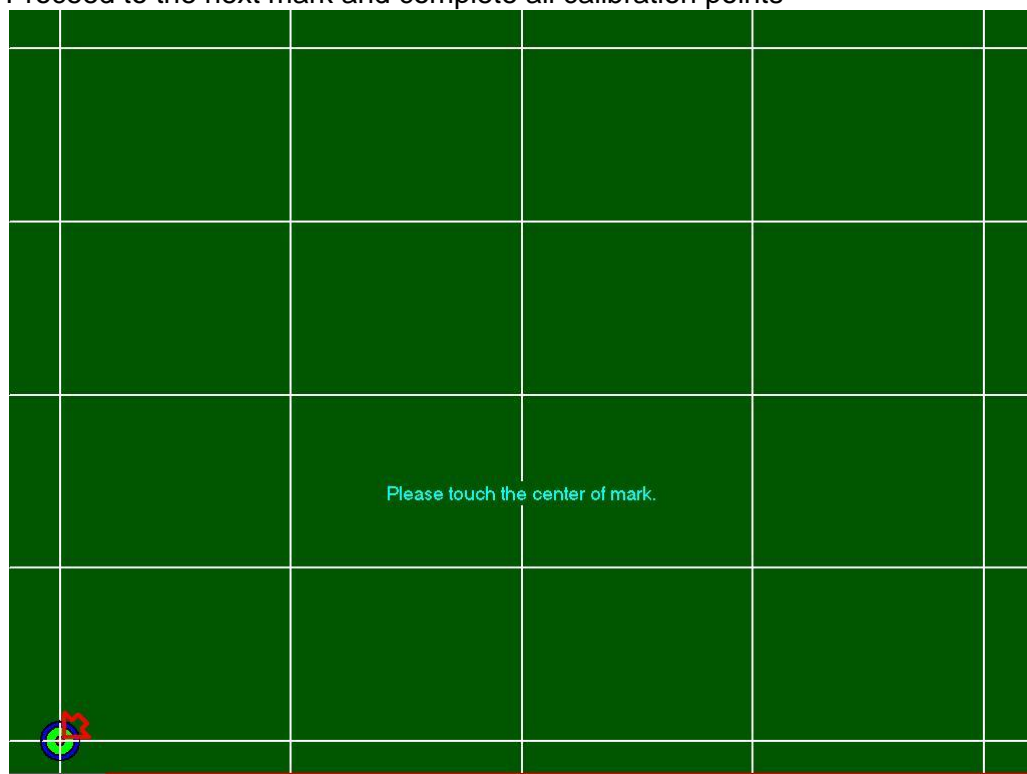
- a. Double click the icon to access the utility.



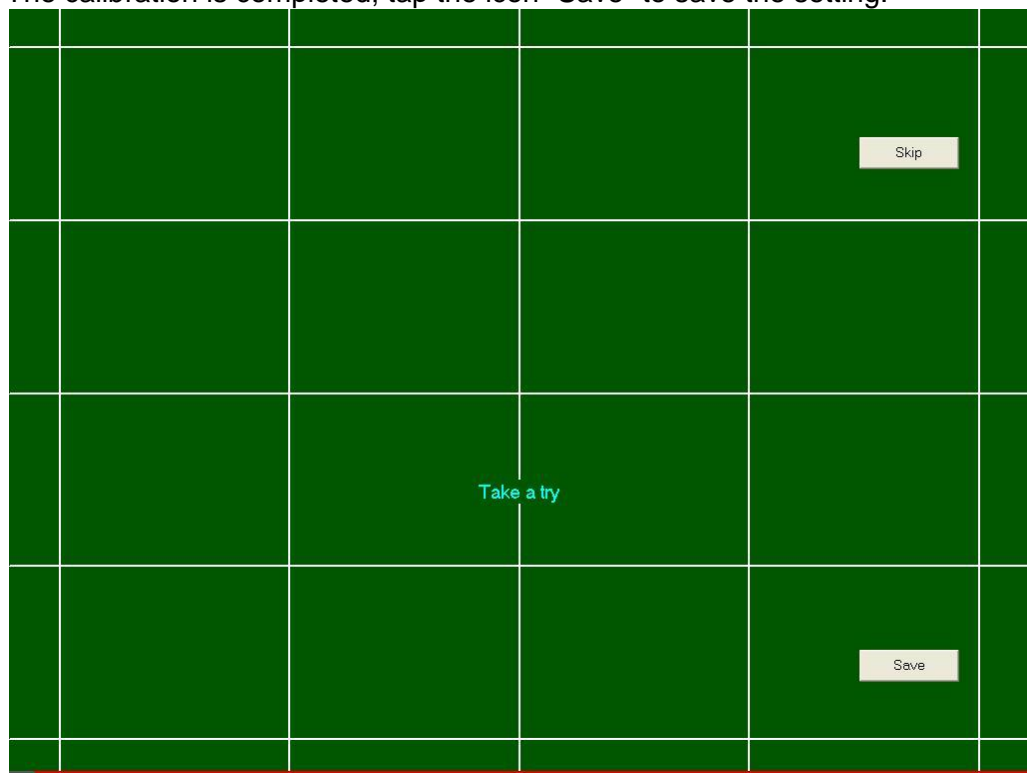
- b. User can perform 4-point-calibration by selecting the function “4 pts calibration”.



- c. There are 4 calibration points on the screen.
Tap the blinking mark to complete the first calibration point.
Proceed to the next mark and complete all calibration points



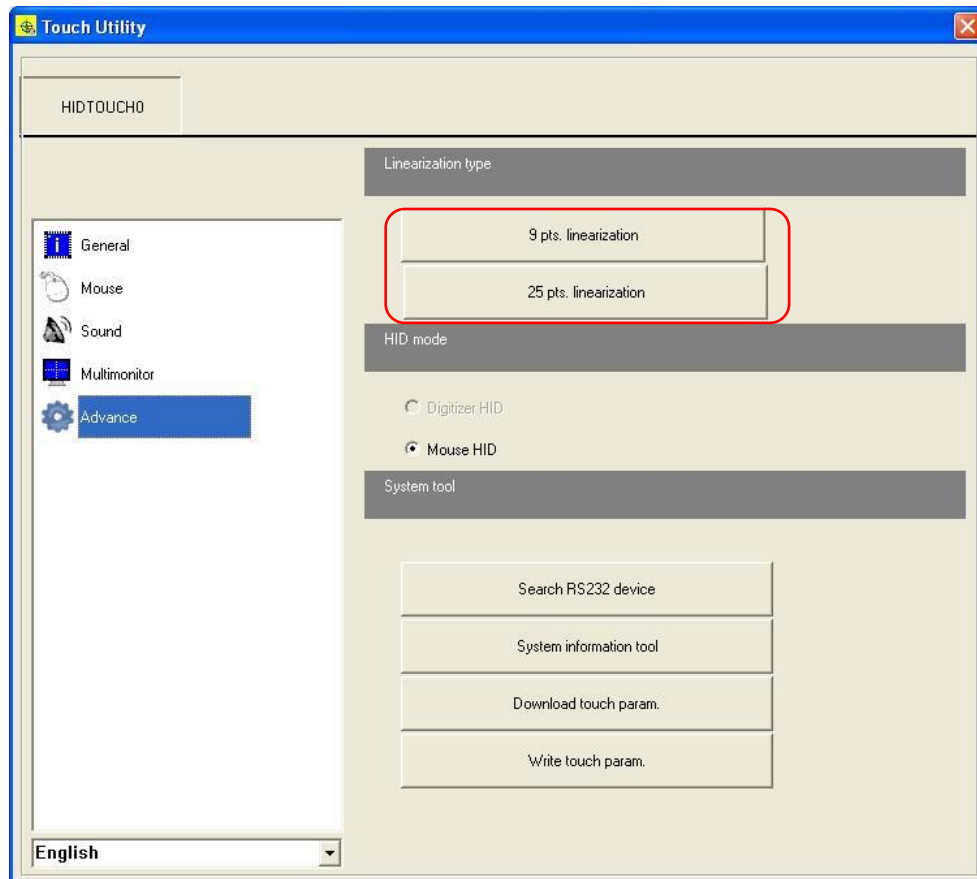
- d. The calibration is completed; tap the icon "Save" to save the setting.



Tips: Advanced 9-point/25-point Calibration

There are advanced 9-point calibration and 25-point calibration for more accurate calibration demands.

Access “Advance” menu, and select either “9 pts linearization” or “25 pts linearization” to calibrate your touch screen.

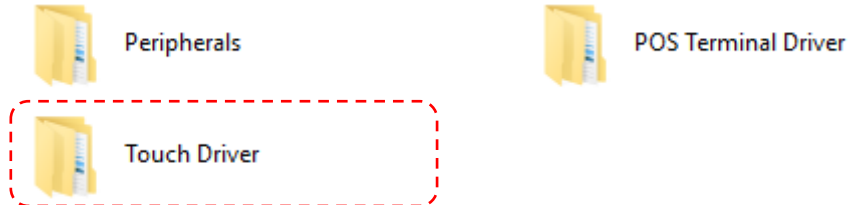


4.2 Projective Capacitive Type Touch Panel

4.2.1 Install the Driver of Projective Capacitive Type Touch Panel

To install the drivers of Projective Capacitive type touch panel:

- a. Double click the folder “Touch Driver” to access the subfolder.



- b. There are drivers of Resistive type and Projective Capacitive type touch screen. To install the driver of Projective Capacitive type touch screen, select (double click) the folder “P-CAP Touch” to start installation.



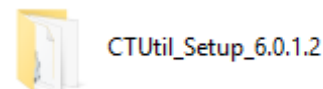
- c. Select the folder “(ATC) J1900 (POS-1000B) & PPD-1000” and access the subfolders.



- d. Select the folder in accordance of the operating system. For Windows systems, select the folder “Windows”.



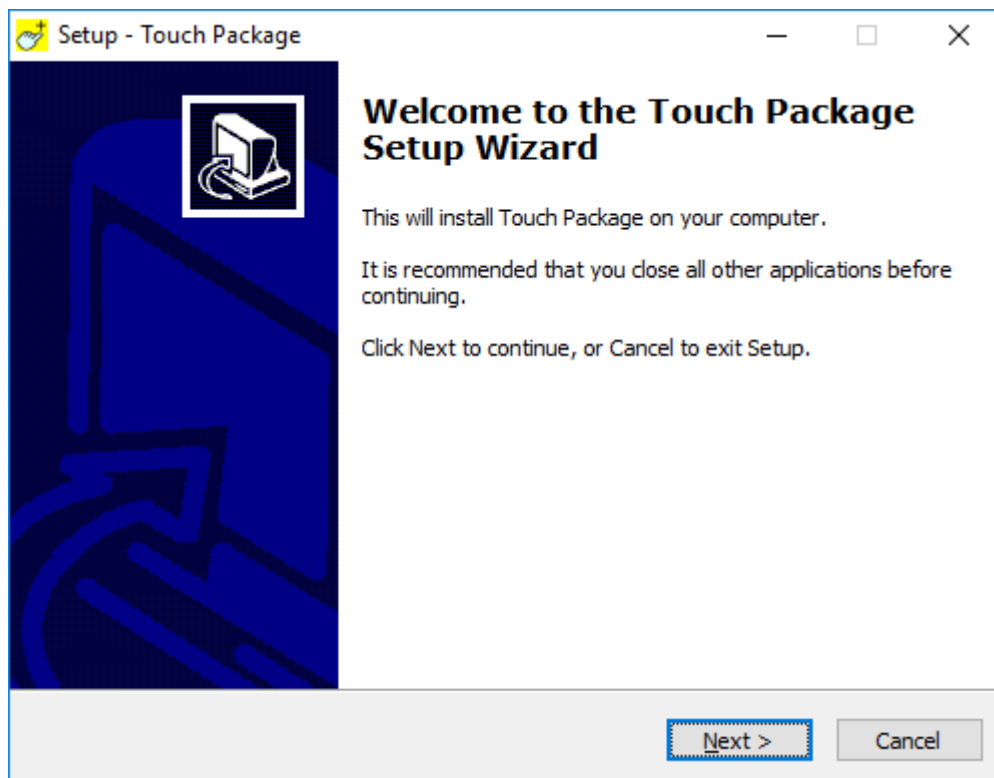
- e. Access the subfolder.



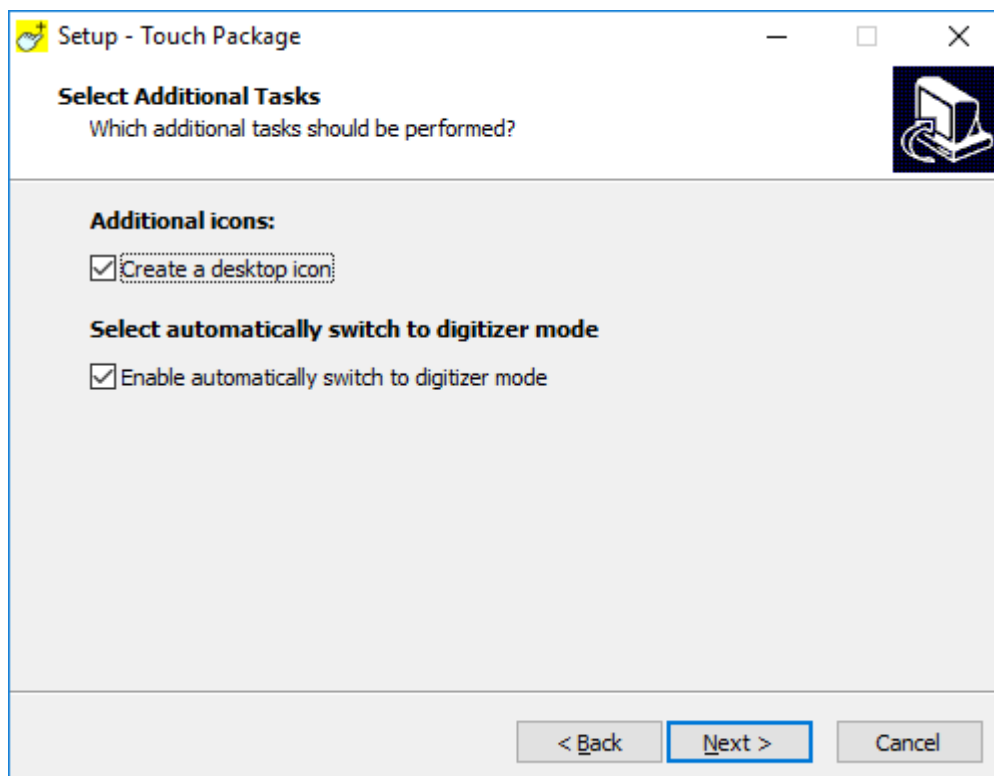
- f. Double click the icon to start the installation.



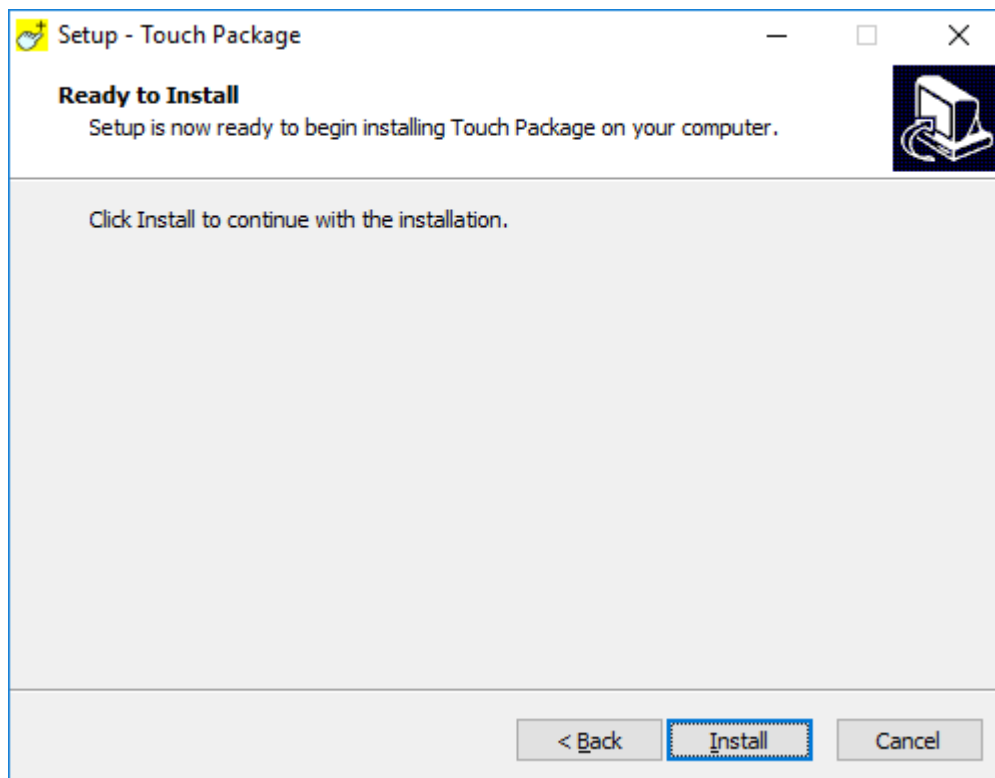
- g. Click “Next” to start the installation.



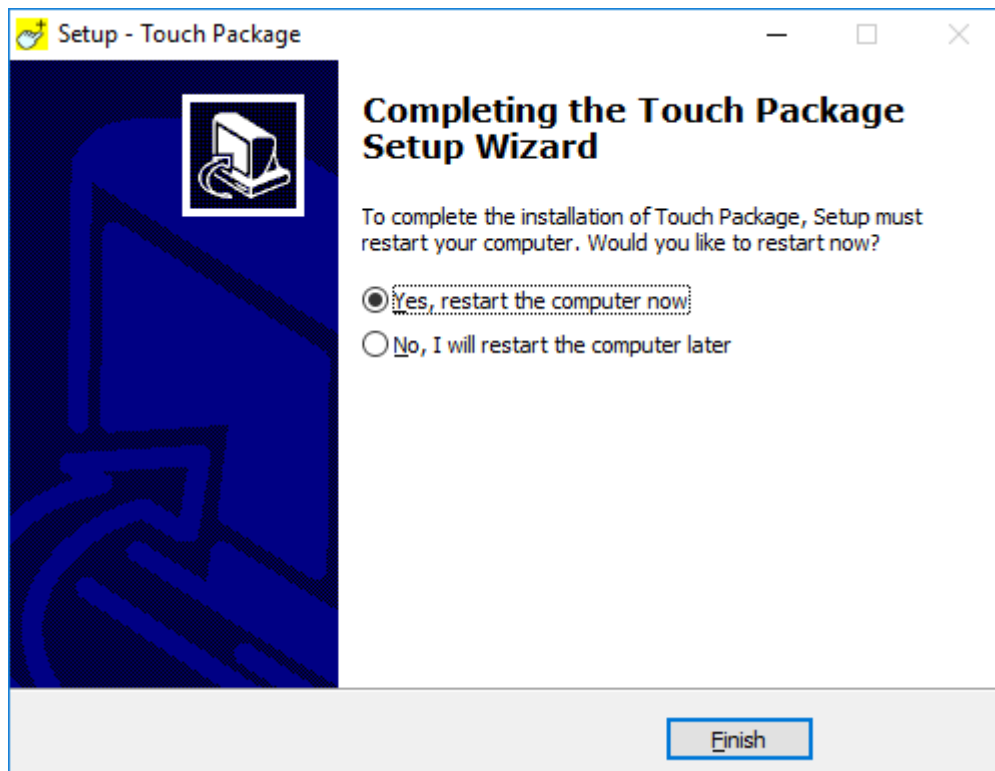
- h. Select Additional Tasks.
You can click the checkbox “Create a desktop icon” to add an icon on the desktop.
Click “Next” to continue.



- i. Click “Install” to continue.



- j. Installation Completed.
It's recommended to restart the system after the installation is completed.
Click the checkbox “**Yes**” to enable restart sequence.
Click “**Finish**” to exit. and restart the system



4.2.2 Touch Screen Utility

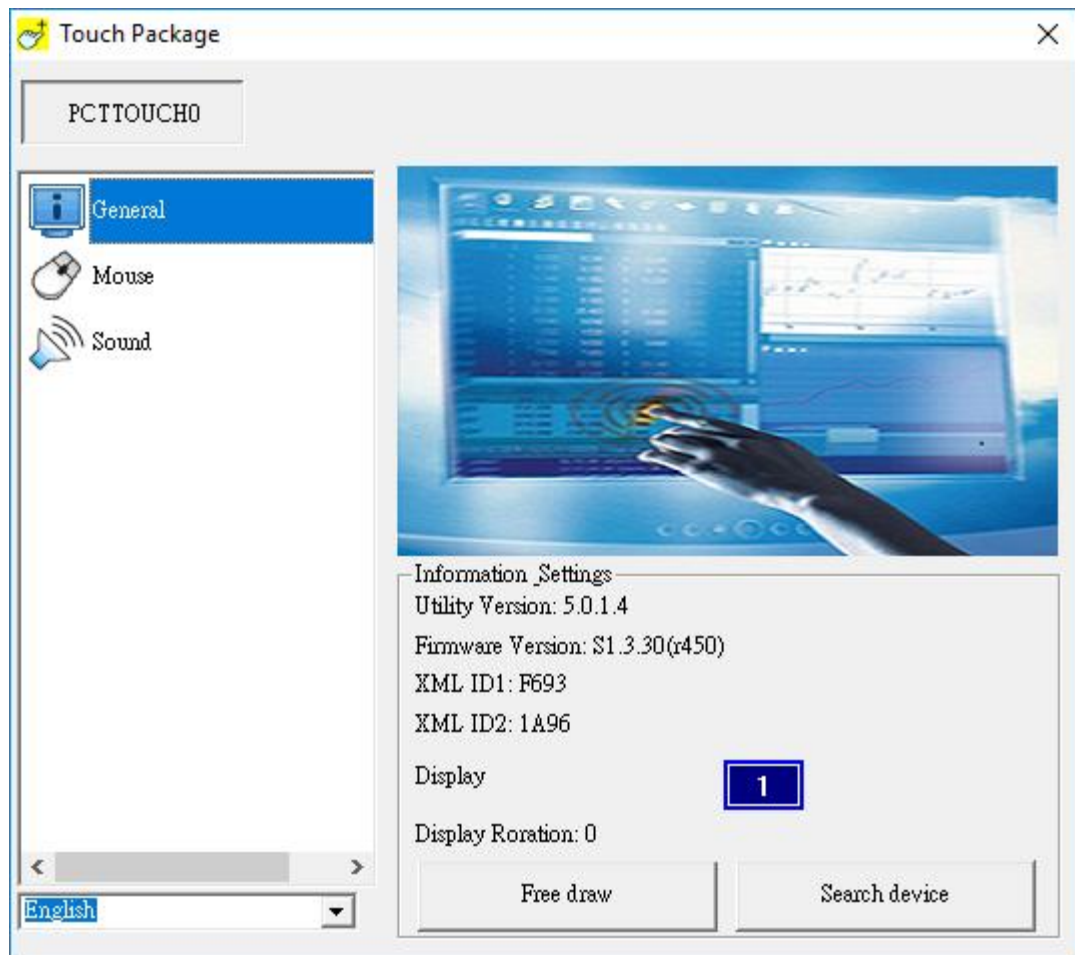
After the driver is installed to the system, there is a shortcut on the desktop for touch screen settings. User can re-configure the touch screen by initiating the utility.

To calibrate the touch screen:

- a. Double-Click the icon to access the utility.



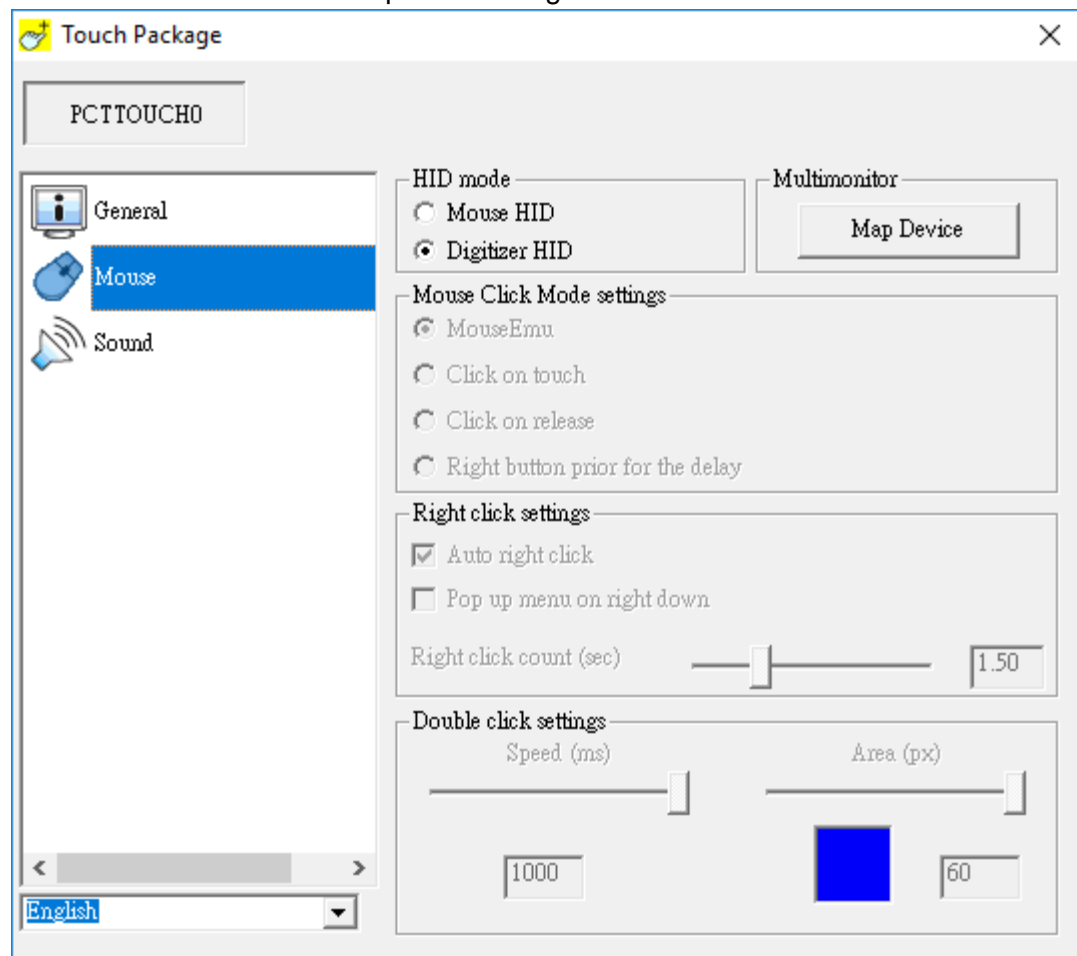
- b. The General Menu:
Device status and “Free draw” button.



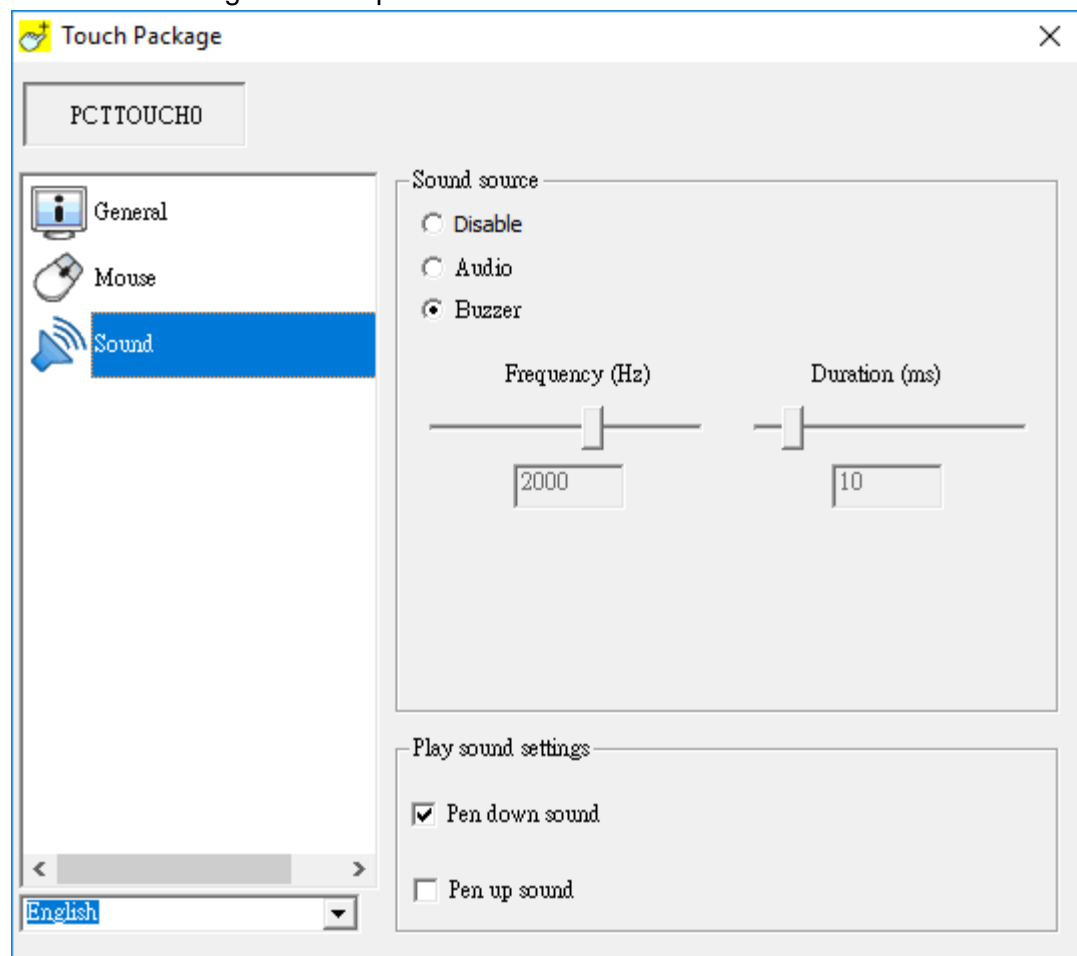
Note: Menu Language

You can change the utility menu language by selecting the scroll menu below.

- c. Mouse Setting:
Configuration of mouse.
It's recommended to use the preset settings.

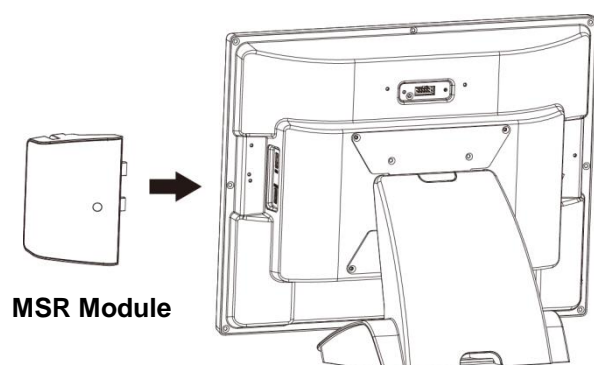


- d. Sound:
The sound settings of touch panel.



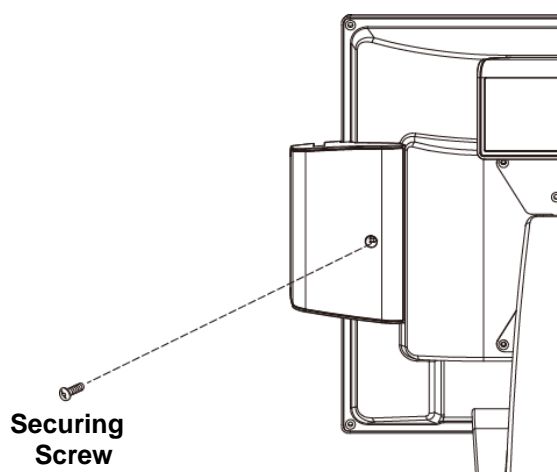
Appendix: Install the MSR Module (Optional)

If you purchase the customized MSR module, you can install the MSR module to the side of LCD monitor and connect to the PC unit via interface cable.



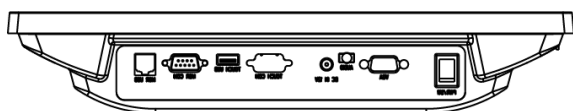
MSR Module

- a. Turn Off the power of the LCD monitor.
- b. Install the MSR Module to the Side I/O port (USB type or COM type).
Please install the MSR to the correct port.



**Securing
Screw**

- c. Tighten the securing screws and Turn-on the unit.
- d. Use the interface cable (USB or COM) and connect to the PC unit.



Note:

Please purchase the customized MSR module and Interface Cable (USB or DB9 COM type) separately.

Please consult the technical personnel before purchase.

