

# **TYSSO®**

## **PRP-188**

### **Thermal Receipt Printer**

**Instruction Manual**



Save the user manual for future reference.



# Contents

<b>A. IMPORTANT SAFETY NOTIFICATION .....</b>	<b>1</b>
<b>B. PRODUCT OVERVIEW .....</b>	<b>3</b>
<b>Main Features .....</b>	<b>3</b>
<b>Packing .....</b>	<b>4</b>
<b>Specification .....</b>	<b>5</b>
<b>Part Description.....</b>	<b>7</b>
<b>DIP Switch Configuration .....</b>	<b>14</b>
<b>C. INSTALLING YOUR PRINTER .....</b>	<b>16</b>
<b>Connecting Your Printer .....</b>	<b>16</b>
<b>Vertical Printing Installation .....</b>	<b>17</b>
<b>Install/Replace the Paper Roll .....</b>	<b>18</b>
<b>Installing the Driver of Your Printer .....</b>	<b>20</b>
a. For USB Interface: .....	24
b. For Serial Interface.....	27
c. For LPT Interface: .....	31
d. For Ethernet (TCP/IP) Interface: .....	34
e. For UTP Interface.....	42
f. Examine the Printer.....	46

<b>D. APPENDIX.....</b>	<b>47</b>
1. Self Test .....	47
2. Cutter Maintenance.....	48
3. Interface PIN Assignment .....	50
4. Code Page Setup.....	53

## A. Important Safety Notification

- Read the instruction manual carefully before use. Save the manual in the near location for further reference.
- Use only parts or accessories, especially power adapter, recommended by the manufacturer; unapproved parts may be hazardous and cause injuries to the product or human.

### **WARNING:**

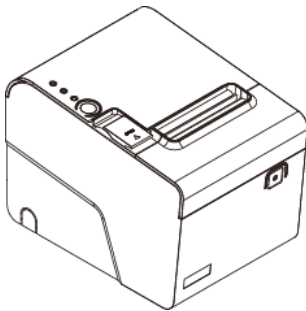
IF ANY FUNCTIONAL PROBLEMS OR DEFECTS OCCUR WHICH ARE ATTRIBUTABLE TO IMPROPER USE OF THE PRODUCT SHALL VOID THE WARRANTY.

- Refer servicing to qualified personnel only.
- Do not attempt to repair or disassemble the product on your own. Opening or removing cover can expose you to dangerous voltage or other hazards.
- Before plugging the power cord into the AC inlet of the power supply unit, make sure that the voltage applied to the power outlet is within the specified range (100V ~240V). Improper power source voltage range will cause damage to the power supply unit.
- Power off the product and remove the power adapter while cleaning the system.
- Before powering on the product, make sure all the connectors, cables are firmly installed.

## Important Safety Notification

- Do not expose the product to rain or moisture, such as a bathtub, a washbowl, a kitchen sink, a laundry tub, and a swimming pool.
- Do not expose the machine under direct sunlight, and keep it away from any heat source.
- Do not place the product on an unstable location, stand or table. If the machine falls, it may injure a person or cause serious damage to the appliance.
- Do not allow anything to rest on the power cord. Do not locate the product where people may walk on the cord.
- Do not make the power outlet and extension cords overload. Overload can result in fire or electric shock.
- If any of the following situations occurs, unplug the product from the power outlet immediately and consult with a qualified service person:
  1. The power cord or plug is damaged or frayed.
  2. Liquid is spilled into the system.
  3. The product is dropped and damaged.
- Use a soft cloth to clean the product when it is dirty. In case the dirt is hard to remove, use a mild detergent and wipe the product gently.  
Turn OFF and unplug the product before cleaning.
- When the product is not in use, clean and stores it with care.

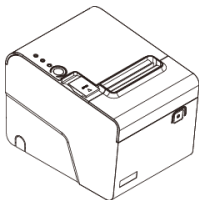
## B. Product Overview



### Main Features

- Splash and dust proof design
- Paper Auto-Cutter
- Vertical printing
- Multi I/O Interfaces:  
(Serial +Ethernet +USB or Parallel +USB)
- Cash drawer connection port (RJ-11)
- Compatible with ESC/POS print commands set
- Various Drivers available
- User friendly, drop-and-print paper installation, simple paper jam elimination
- Optional audible indicator version good for noisy environment operation
- Multiple Language fonts selectable
- DHCP Client Mode support

## Packing



**Printer Unit**



**Power Adaptor**



**\*Power Cord**



**\*\*Printer Cable**



**Paper Roll**



**Quick  
Installation  
Guide**

\* Power Cord is selectable depending on the types of electrical plug.

\*\* Printer cable is selectable depending on the interface required (RS-232, USB, RJ-45 or Parallel).

Please refer to the nearest local representatives for further information.



## Specification

General		
<b>Print Method</b>		Thermal line printing
<b>Print Speed</b>		250mm/sec
<b>Print Life</b>		100 Km
<b>Print Font</b>	<b>(ASCII Mode)</b>	ANK Font. Font A: 12 x 24 dots, Font B: 9 x 17 dots
	<b>Graphic Font)</b>	Chinese Character: 24 x 24 dots
<b>Print Resolution</b>		576 dots/line or 512 dots/line
<b>Print Font Character Support *</b>		International Font, Big 5 Chinese, GB Chinese, Japanese, Korean selectable
<b>Character Per Line</b>		48 (Font A) / 42(Font B)
<b>Effective Print Width</b>		72mm
<b>Paper Width</b>		79.5mm± 0.5mm
<b>Paper Roll Diameter</b>		≤83mm
<b>Paper Thickness</b>		0.06~0.08mm
<b>Driver</b>		Win 9X/Win ME/Win 2000/ Win 2003/Win NT/Win XP/ Win Vista/Win 7, Win 8 compatible with EPSON and SAMSUNG
<b>Print Command</b>		ESC/POS print commands set
<b>Buffer</b>	<b>Receipt</b>	128K bytes
	<b>User-Defined</b>	128K bytes
	<b>NV Flash</b>	256K bytes

\* All specifications are subject to change without prior notice.

<b>Interface</b>	
<b>I/O Interface</b>	Multi I/O Interface (Serial +Ethernet +USB or Parallel type selectable)
<b>Cash Drawer</b>	DC 24V/1A, 6-Wire RJ-11

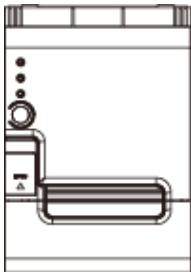
<b>Notification</b>	
<b>Indicator</b>	Audio and LED Indicators
<b>Auto Cutter</b>	Partial
<b>Paper End Notice</b>	Yes
<b>Over-Heat Halt-on Protection</b>	<b>Yes</b>

<b>Others</b>	
<b>Power Input</b>	24VDC/2.5A (External Adapter: 100~240VAC 50/60Hz)
<b>Color</b>	Black
<b>Compliance</b>	FCC / CE / WEEE / RoHS
<b>Weight</b>	1600g (without cable )
<b>Dimension (mm)</b>	202(L) x 140(W) x 149(H)
<b>Operating Temperature</b>	0°C~45°C
<b>Operating Humidity</b>	10% ~ 80% RH, non-condensing
<b>Storage Temperature</b>	-10°C~ 60°C
<b>Storage Humidity</b>	10% ~ 90% RH non-condensing

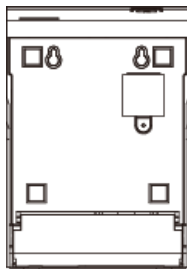
\* All specifications are subject to change without prior notice.

# Part Description

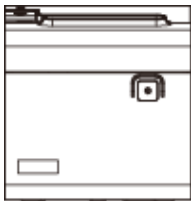
## Product Views



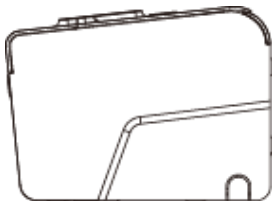
**Top View**



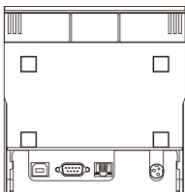
**Bottom View**



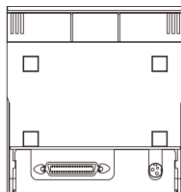
**Front View**



**Side View**

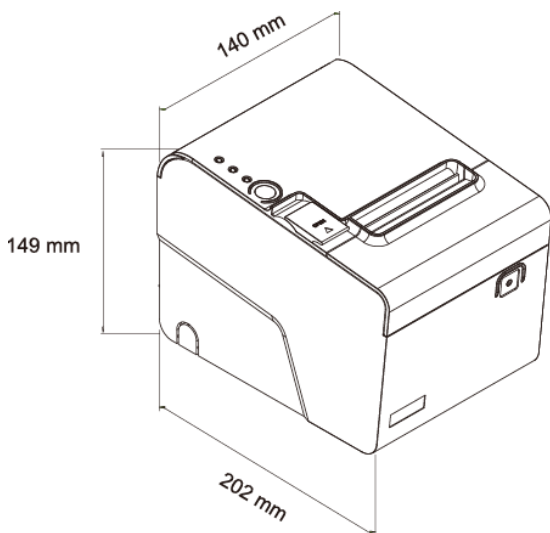


**Rear View (Serial/USB)**

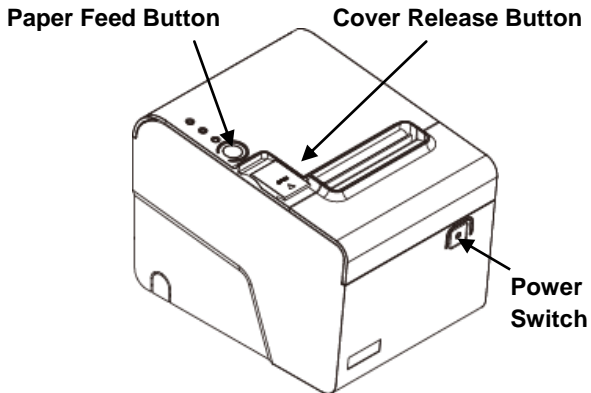


**Rear View (Parallel)**

## Dimensions



## Control buttons & Indicators



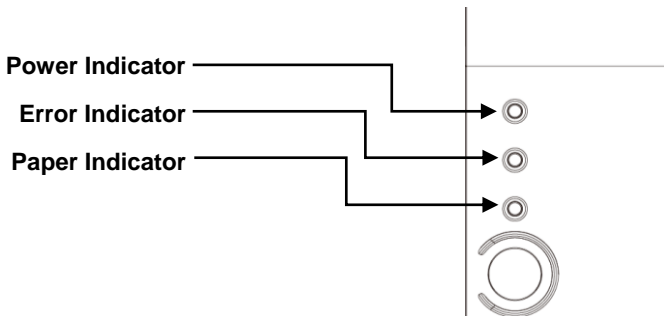
### **Paper Feed:**

This function is to advance the paper.  
Press the key and the paper advances by a single line.  
Press and hold the key for over 3 seconds and the paper advances by multiple lines.

### **Cover Release Button:**

Push the button to the right to open the printer cover.

## Indicator Status

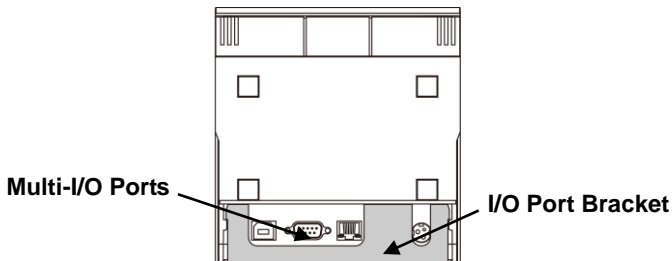


Indicator	Status	Description
Power	●	Power Off
	●	Power On
Error	●	Printer Error (Out of paper, Printer head over heat, or paper cutter error)
Paper	●	Out of paper * The Error Indicator is lit as well

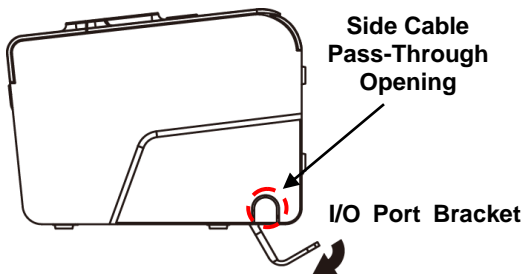
## I/O Ports & Cables

When plug the cables to the printer, pull the I/O Port Bracket beforehand so as to secure connectors easily.

Open the side cable pass-through opening if necessary.



**Rear View**



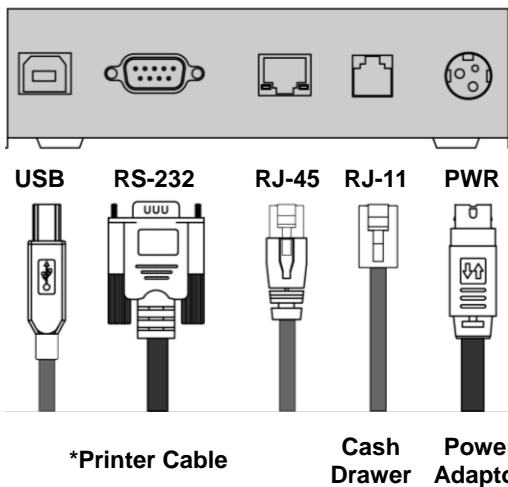
**Side View**

### **Note:**

Remember to re-install the I/O Port Bracket to the printer as the connectors are properly secured.

## Multi-I/O Ports

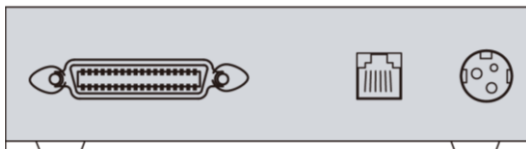
### RS-232/USB Type



\* Printer cable is selectable depending on the interface required  
Please use the supplied printer cable or purchase it separately



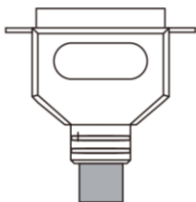
## Parallel Type



**Parallel Port**

**RJ-11**

**PWR**



**Printer Cable**



**Cash  
Drawer**

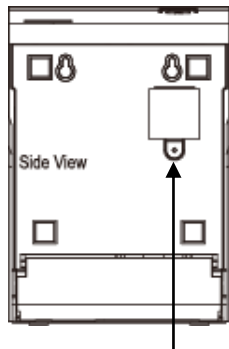


**Power  
Adaptor**

## DIP Switch Configuration

To change the setting of the printer manually:

1. Turn off the printer.
2. Loosen the securing screw to remove the protective cover of the DIP Switches.
3. Adjust the switches to configure the printer.



Protective  
Cover



Configuration DIP Switches

DIP	Function	ON	OFF
1	Paper Cutter	No	Yes*
2	Audio Alarm	Yes *	No
3	Print Density	Dark	Light *
4	Two-byte Character Code	No	Yes*
5	Character Per Line	42	48 *
6	Cutter with Cash Drawer	Yes	No *
7 & 8	Baud Rate Setting	---	OFF*

The “\*” mark indicates the default value of each setting.

## Baud Rate Setting (DIP 7, DIP 8)



**19200**  
**(\*Default)**



9600



115200

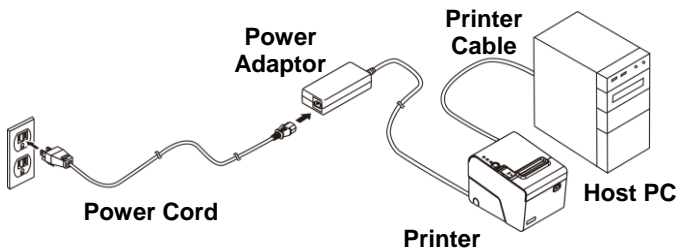


38400

## C. Installing your Printer

### Connecting Your Printer

Please check the printer and the supplied accessories before Installation. It's recommended to read the entire instruction manual prior to the installation.

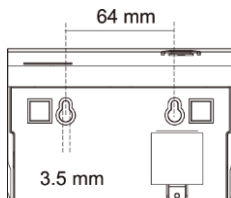
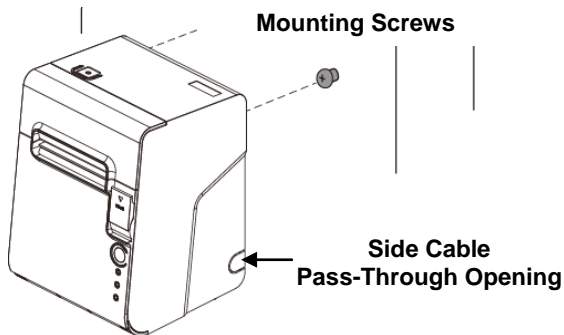


1. Place the printer on the designate location.
2. Detach the I/O Port Bracket.  
Plug the connector of Power Adaptor to the printer.
3. Use the supplied Printer Cable (RS-232, Serial, USB or RJ-45) and connect to the Host PC.
4. Plug the Power Cord to the Power Adaptor and then plug to the power outlet.
5. If there is a Cash Drawer to be connected, connect the RJ-11 cable to the printer.
6. Re-install the I/O Port Bracket.

## Vertical Printing Installation

You can install the printer onto a flat surface vertically and perform printing tasks. It is convenient when the space is important concerns:

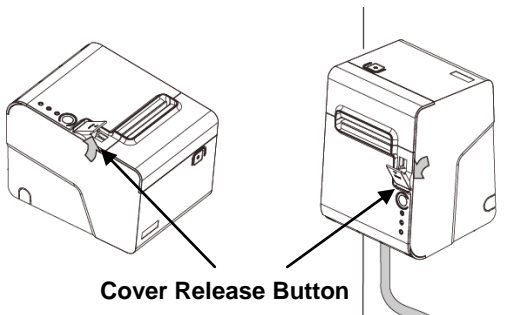
1. Secure two mounting screws onto the location (e.g. wall).
2. Connect the cables to the printer.
3. Place the printer on the location with the mounting holes fitted on the screws.



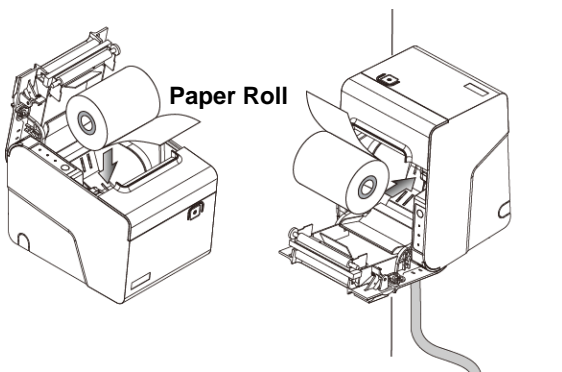
**Mounting Holes**

## Install/Replace the Paper Roll

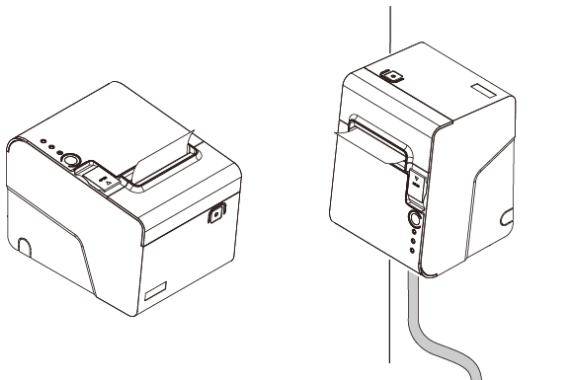
1. Pull the Cover Release Button to open the Cover.



2. Roll out and install the Paper Roll into the Printer.



3. Replace the Cover and tear out the paper.



## Installing the Driver of Your Printer

Before installing the driver of your printer, make sure the printer is properly connected to the host PC.

1. Access the website [www.fametech.com.tw](http://www.fametech.com.tw) and download the driver.
2. Double click the icon “SetupPRP.EXE” to initiate the installation.



### Note:

For Windows 7 / Vista and the later version,  
Please Right-Click the icon and use  
“**Run as administrator**” option while installing the  
Driver.

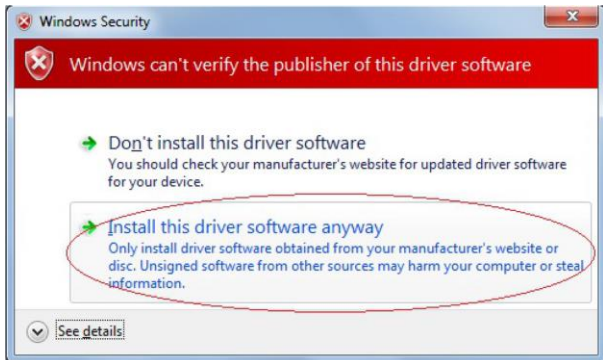




3. Click “Install” to continue.



4. Select “Install this driver software anyway”.



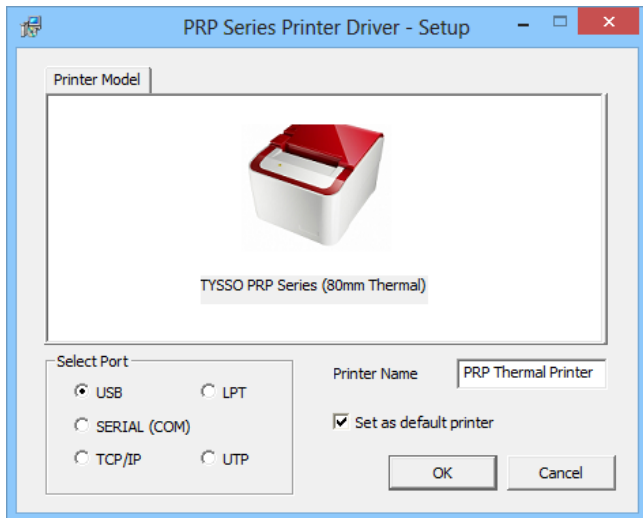
5. **Select the Printer Port.**

Enter printer name and select the port type for installation.

(USB, Serial, TCP/IP, LPT or UTP).

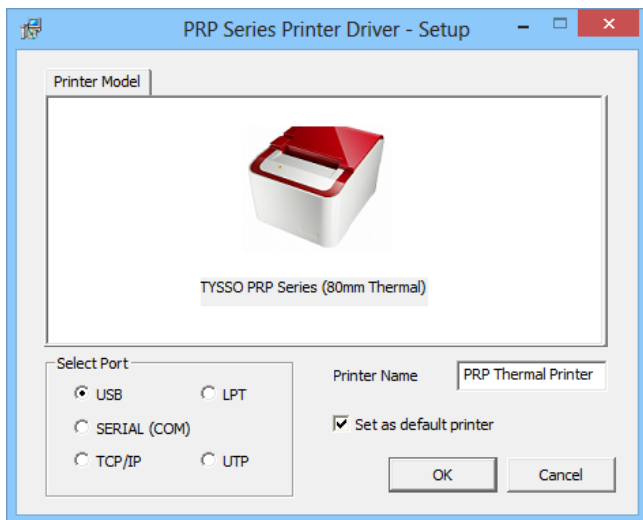
6. You can click the checkbox to set the printer as default printer.

Click “OK” to continue.

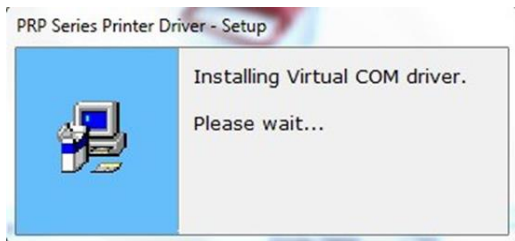


**a. For USB Interface:**

Select the USB port

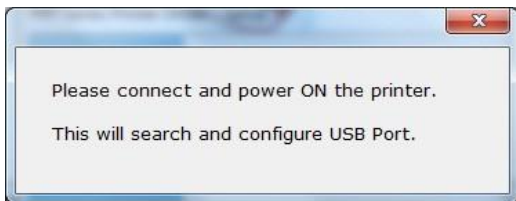


The Virtual COM driver is installed during the process.



- **Searching USB Device:**

If the printer is already attached and the message box below is displayed, please Power OFF and Power ON the printer to continue installation.



- **Installation completed**

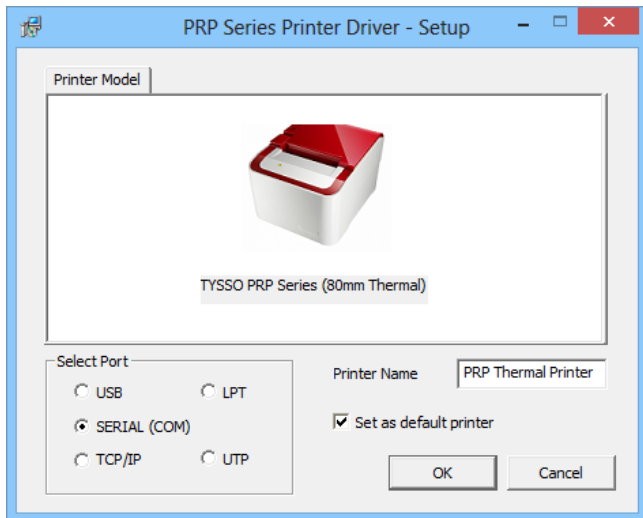
The driver is successfully installed.

Click “Finish” to exit the menu.

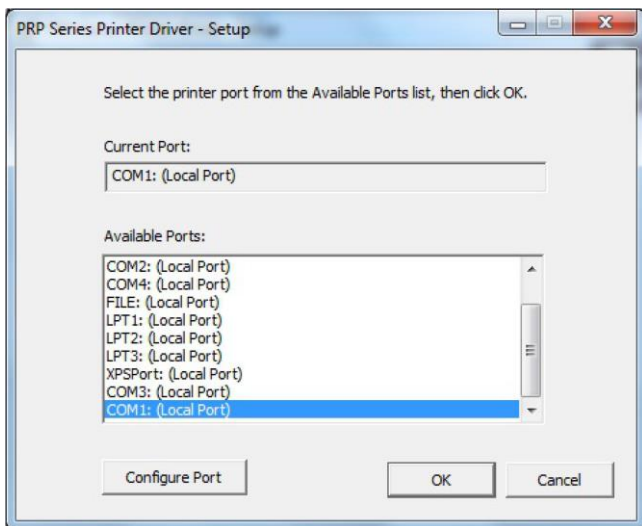


## b. For Serial Interface

Select and configure the serial port for driver installation.



Select the COM port preferred and click “OK” to continue.



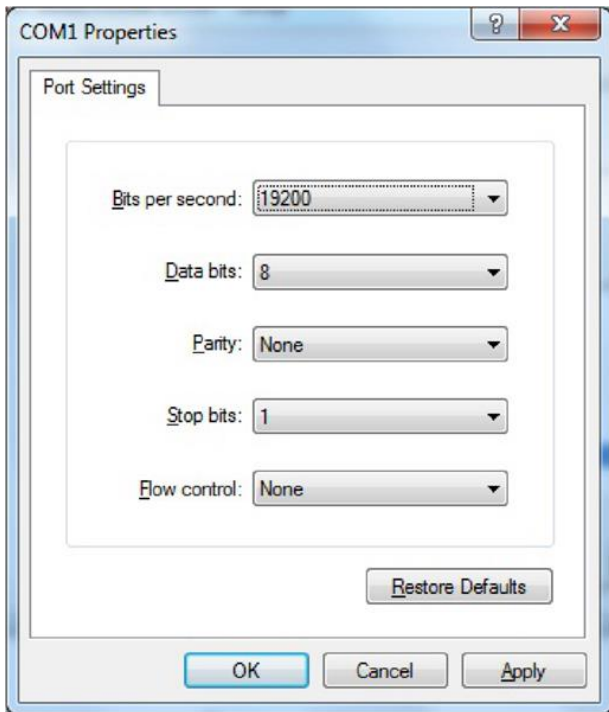
To configure the selected COM port, select the COM port and click “Configure Port” to continue (see next page).



- **Configure the Serial Port:**

Select the proper settings

(baud rates. Data bits, parity...etc.)



- **Installation completed**

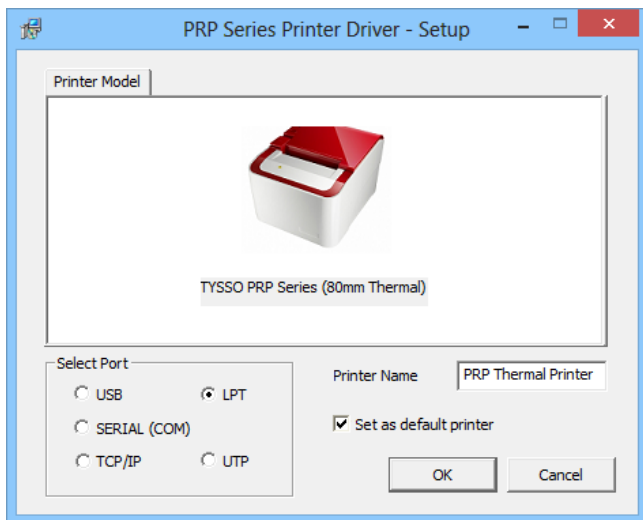
The driver is successfully installed.

Click “Finish” to exit the menu.

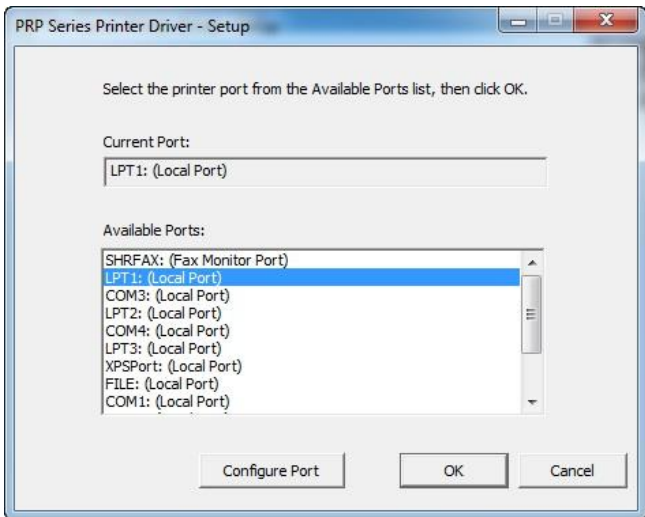


**c. For LPT Interface:**

Select the LPT port



Select the LPT port preferred and click “OK” to continue.



- **Installation completed**

The driver is successfully installed.

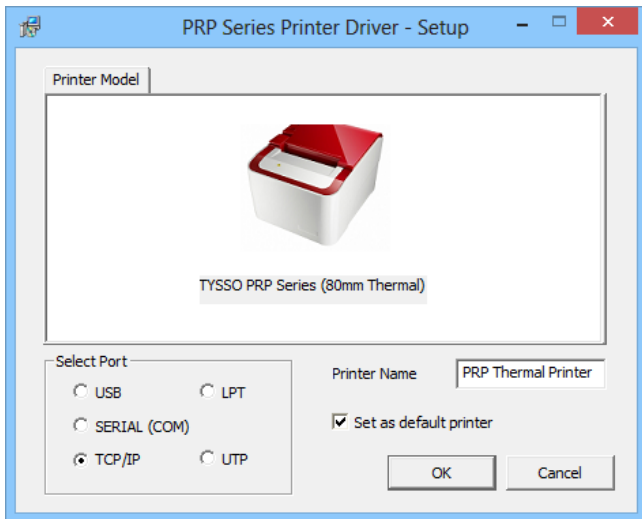
Click "Finish" to exit the menu.



**d. For Ethernet (TCP/IP) Interface:**

Select and assign a TCP/IP port for your printer.

Click “OK” to continue.



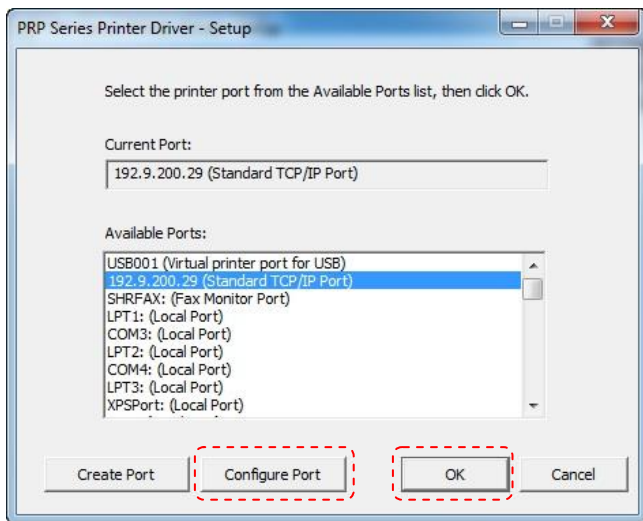
**Note:**

**Printing on the TCP/IP Port is only possible if both IP Address (Printer and Computer) belongs to the same class.**

- **Select IP Address**

Move the cursor to the Available Port (IP address).

Click “OK” to continue.

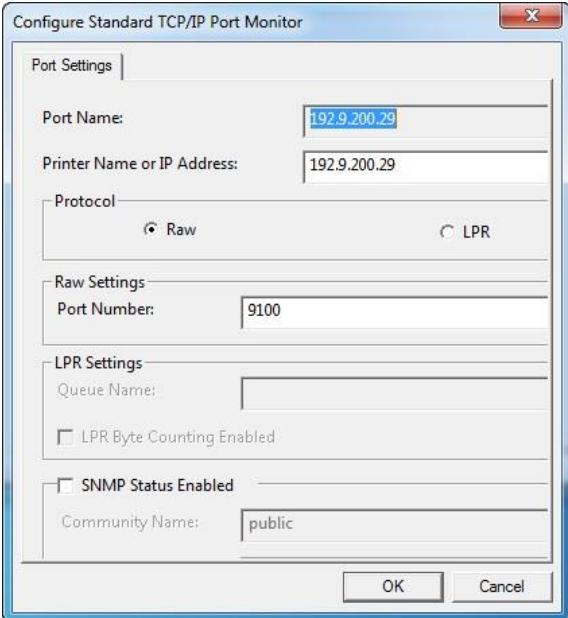


**Note:**

User can configure the selected USB IP port or create a new IP address manually.

## To Configure The TCP/IP Port:

Configure port (If required) by clicking “Configure Port” button and apply settings.



The screenshot shows a Windows-style dialog box titled "Configure Standard TCP/IP Port Monitor". The dialog is divided into several sections:

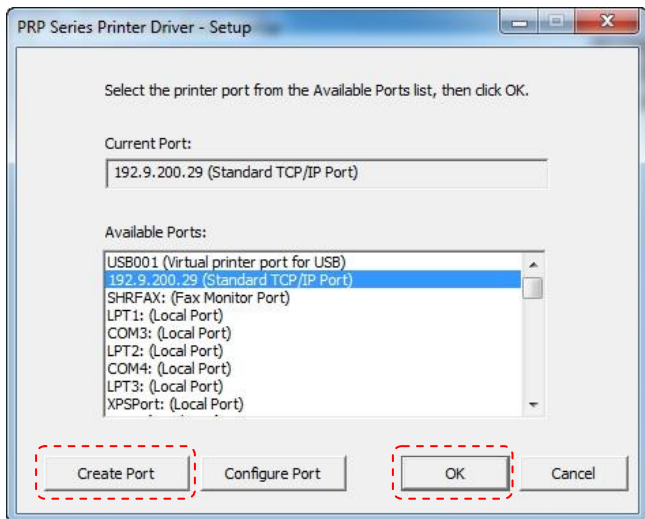
- Port Settings:** Contains two text input fields. The first is labeled "Port Name:" and contains the text "192.9.200.29". The second is labeled "Printer Name or IP Address:" and also contains "192.9.200.29".
- Protocol:** Features two radio buttons. The "Raw" button is selected, while the "LPR" button is unselected.
- Raw Settings:** Contains a text input field labeled "Port Number:" with the value "9100".
- LPR Settings:** Contains a text input field labeled "Queue Name:" which is currently empty. Below it is a checkbox labeled "LPR Byte Counting Enabled" which is unchecked.
- SNMP Status Enabled:** Contains a checkbox labeled "SNMP Status Enabled" which is unchecked. Below it is a text input field labeled "Community Name:" with the value "public".

At the bottom right of the dialog, there are two buttons: "OK" and "Cancel".



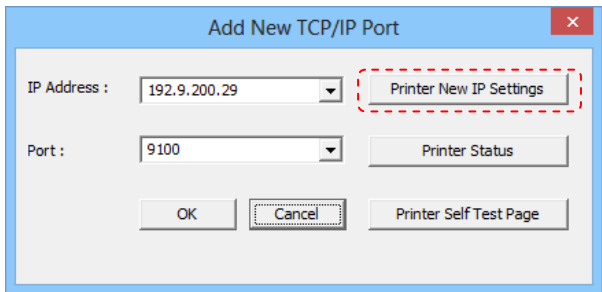
## To Create a New TCP/IP Port:

If TCP/IP port doesn't exist in the list, click "Create Port" button for further installation.



## Add New TCP/IP Port:

IP Addresses of all the Printers that are attached over the network are shown in “Add New TCP/IP Port” dialog.



### IP Address:

The present IP address setting of the printer. Select a correct IP address for the printer.

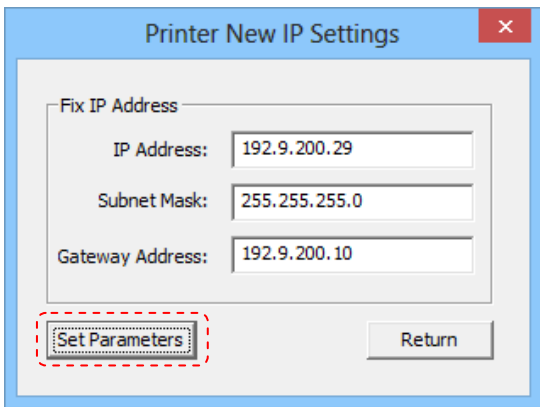
### Printer Self Test Page:

User can click “Printer Self Test Page” button to print out the test page.

### Set Parameters:

Click “Printer New IP Settings” button to configure the Printer parameters settings (see next page).

## Printer New IP Settings:



Printer New IP Settings

Fix IP Address

IP Address: 192.9.200.29

Subnet Mask: 255.255.255.0

Gateway Address: 192.9.200.10

Set Parameters

Return

User can enter the New IP address, Subnet Mask, and Gateway Address manually.

Click “Set Parameters” button to confirm the new parameters of Printer.

### **Note: Reboot the Printer**

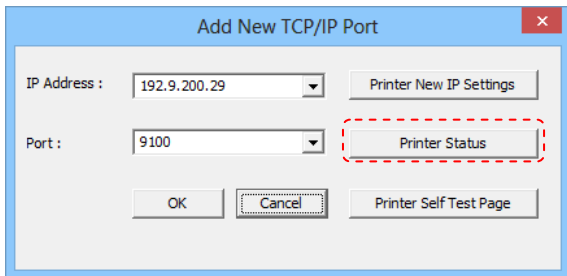
The printer will reboot automatically and return to the previous menu after the new parameters are confirmed.

### **Cancel:**

User can click “Return” button to cancel the new IP settings and return to the previous menu.

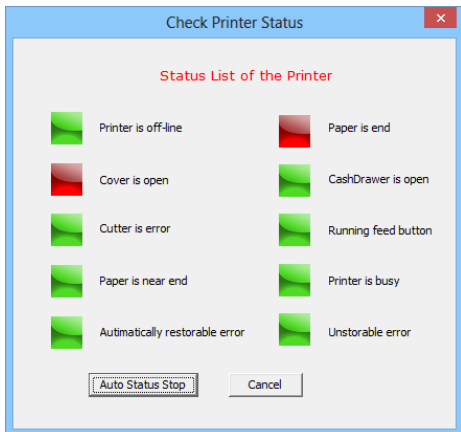
## Printer Status:

Click “Printer Status” to examine the printer.



Check the status list and resolving the red-mark items.

Click “Cancel” to return



- **Installation completed**

The driver is successfully installed.

Click "Finish" to exit the menu.



## **e. For UTP Interface**

### **WARNING:**

This instruction is **ONLY** for customized model with UTP (USB to Parallel) interface.

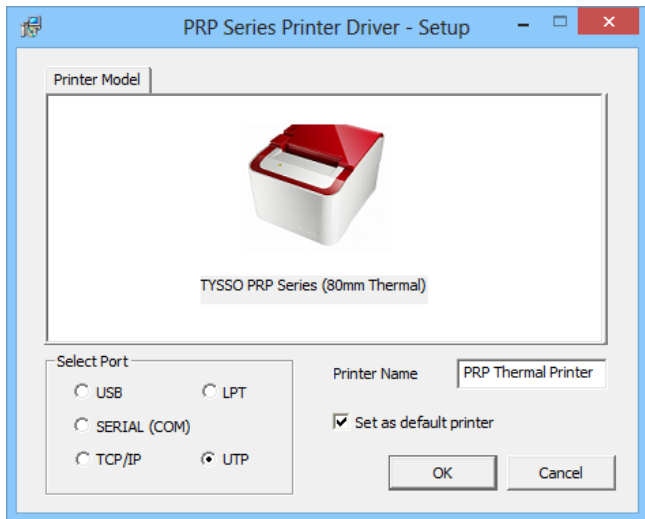
**DO NOT** install the driver to any models not support the UTP interface. It may cause the printer not functioning

### **Before Installation:**

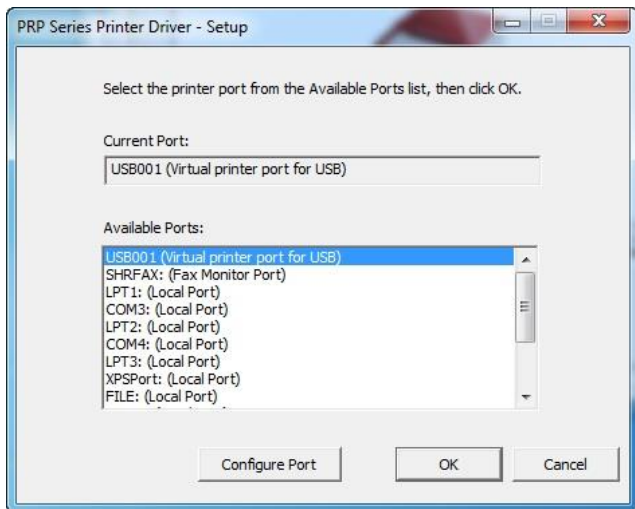
Please consult the local supplier and purchase the customized models support UTP (USB to Parallel) interface.

- Select the UTP Port

Select the UTP port and Click “OK” to continue.



Select the LPT port preferred and click “OK” to continue.





- **Installation completed**

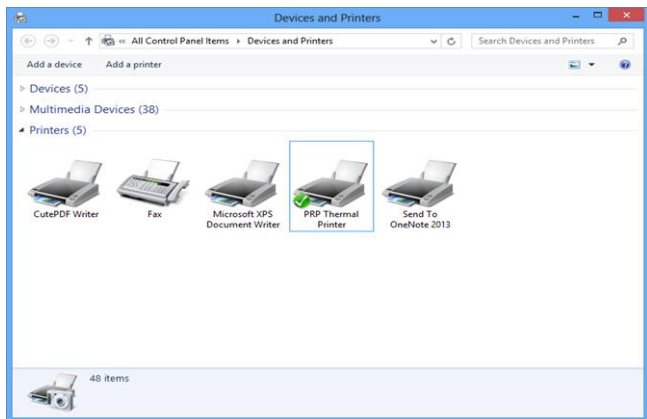
The driver is successfully installed.

Click "Finish" to exit the menu.



## f. Examine the Printer

Now user can access to the “Devices and Printers” and examine the new printer.



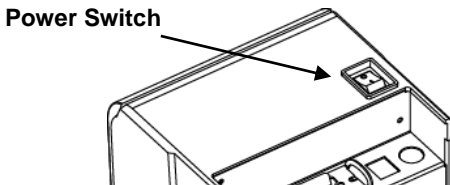
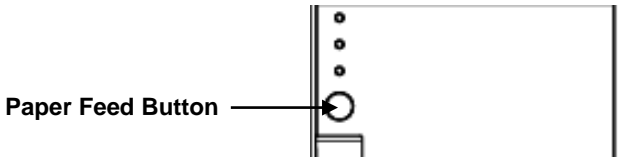
## D. Appendix

### 1. Self Test

This function allows user to perform self-test and print out the settings of the printer unit:

1. Turn off the printer.
2. Press and hold the Paper Feed Button.
3. Turn on the Power Switch of the printer.
4. Release the Paper Feed Button.

The Indicators would blink and then the printer starts printing out the self test data.



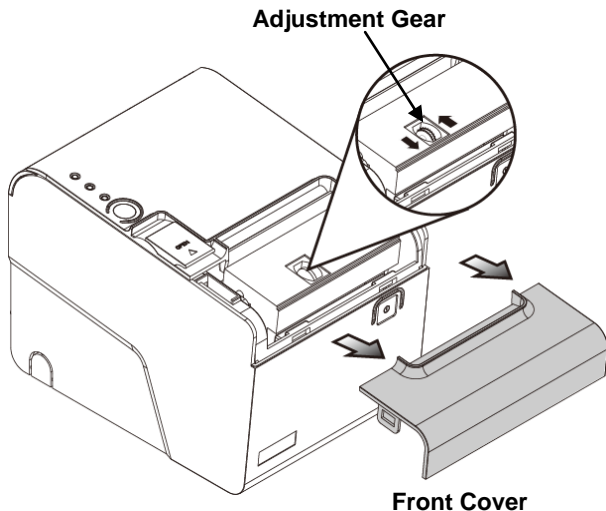
## 2. Cutter Maintenance

In general, the printer will initial and reset the cutter when turn on the power. To reset the cutter back to the initial position:

1. Turn off the printer.
2. Turn on the printer and the printer will initial and reset the cutter.

User can manually reset the cutter back to initial position (as images illustrated):

1. Push the Cover Release Button to open the Cover. Examine and remove the paper dust from the printer by using a soft brush.
2. Push the Front Cover and remove it from the printer.
3. There is an Adjustment Gear in the cutter. Turn the Adjustment Gear to move the cutter back to the position.



**Note:**

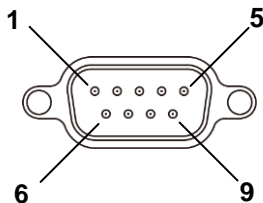
Do not remove the protective cover with force or it may damage the cutter or printer head.

**Warning:**

Beware of the Cutting Edge of the cutter module during maintenance in order to avoid injury to the person near the printer.

### 3. Interface PIN Assignment

- RS-232 Pin Assignment



Pin	Signal	Description
1	N.C.	---
2	TXD	XON/XOF Handshake (Control codes transmission).
3	RXD	Data transmission (the printer receives data from the HOST)
4	N.C.	---
5	GND	Ground
6	DTR	Printer Status
7	N.C.	---
8	RTS.	Printer Status
9	N.C.	---

● **Parallel Pin Assignment**

Pin	Signal	Signal Source	Description
1	/STB	HOST	The HOST (computer) presents the data on the data lines and pulses STB.
2	DATA0	HOST	Indicates Data Bit 0 ~ Data Bit 7 (8 bits)
3	DATA1		
4	DATA2		
5	DATA3		
6	DATA4		
7	DATA5		
8	DATA6		
9	DATA7		
10	nAck	Printer	Acknowledge Signal (Indicates that the printer has received the data successfully and ready to receive the next data).
11	BUSY	Printer	Printer is busy and cannot receive data from the HOST.
12	PE	Printer	Printer Paper is out.
13	Select	Printer	High electric potential.
14, 15	N.C.	---	---
16, 17	GND	---	Ground
18	Logic-H	Printer	High electric potential.
19 ~ 30	GND	---	Ground
31	N.C.	---	---
32	nFault	Printer	Printer Error Signal
33	GND	---	Ground
34 ~ 36	N.C.	---	---

- **RJ-11 Pin Assignment**

<b>Pin</b>	<b>Signal</b>	<b>Signal Direction</b>	<b>Description</b>
1	Ground	---	Frame Ground
2	Cash Drawer Kick Out Signal 1	Output	---
3	Cash Drawer Status	Input	Open/Close
4	+VDC 24v	---	---
5	Cash Drawer Kick Out Signal 2	Output	---
6	GND	---	Signal Ground



## 4. Code Page Setup

1. Access the website [www.fametech.com.tw](http://www.fametech.com.tw) and download the utility files.
2. Click the folder “SetCodePage” to access the software



SetCodePage

3. Double click the icon “Setup.EXE” to initial installation. Follow the instructions to install the utility.



Setup  
Windows Installer Package  
333 KB

## ● Code Page Setup Utility

This utility can help user to setup the code page of the printer.

### Note: Before Setup

It may need to re-configure the printer prior to the codepage setup (e.g.: DIP switch).

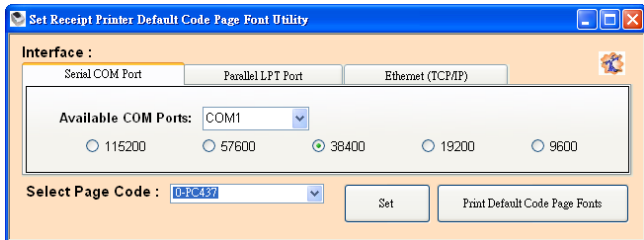
It's recommended to consult the technical personnel relating to the information about the code page and application.

### ■ Interface

User can establish communication with printer via this menu. Select the proper submenu by the connection type of the printer.

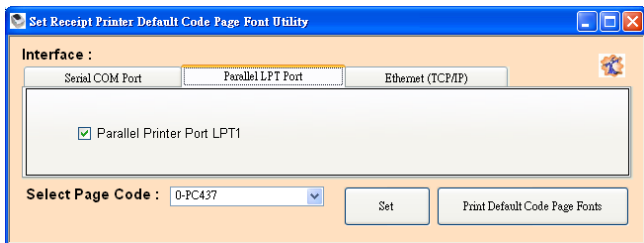
#### For Serial COM Port:

Select the proper COM port and baud rate to establish communication.



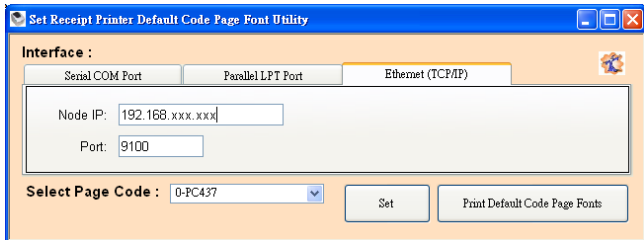
## For Parallel LPT Port:

Select LPT1 as the printer port to establish communication.



## For Ethernet (TCP/IP):

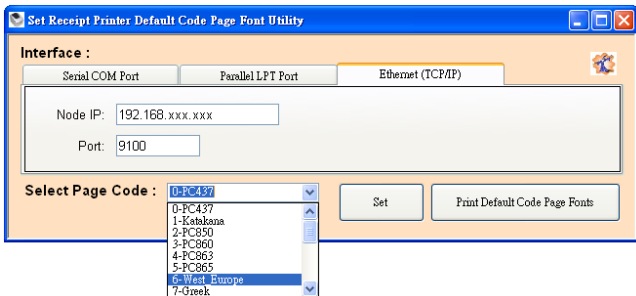
Enter the IP address of the printer to establish the communication.



## ■ Select Page Code

To select the codepage desired:

1. Make sure to the DIP switch 4 of the printer is set **ON** (please refer to DIP Switch Configuration for further information).
2. Go to the scroll menu and select the preset codepage desired.  
User can enter the codepage number into the field manually. (Please refer to the printed Self-Test page for the code number support).
3. Click “Set” button to confirm the setting.



## 4. Re-initiate the Printer:

Be sure to **Turn-Off and Turn-On** the printer again to initiate the printer with new codepage setting.  
(User can perform the self-test again to exam the new codepage setting)

