



Instruction Manual

**Famotech
Thermal Printers**

Version 1.6

CUPS DRIVER Fametech Printer

Product Overview

The newly developed PRP-Series is the milestone products of 2011. The innovative receipt printer include an exciting breakthrough development in that the users no longer need to worry about choosing the corresponding interfaces to pair with their machines. The new receipt printers are all equipped with multi-I/O main boards that combine USB, serial and LAN connections onto a single board.

- . Compact and Stylish Design (Red/White/Black color variation)
- . Paper Auto-Cutter
- . Multi I/O Interface
- . Compatible with ESC/POS print commands set
- . Various Drivers available
- . User friendly, drop-and-print paper installation, simple paper jam elimination
- . Multiple Language fonts selectable
- . QR Code print support

Installation Manual

Let's discuss using screen shots in details.

Installation of Fametech Thermal Printer CUPS Driver Setup

1. Must be login as **ROOT** user.

NOTE: If login not as a **ROOT** user, then go to terminal

Run command: **sudo passwd root**

enter new root Password

after that Run command:

su root

Enter root Password

Go to the setup folder using commnad:

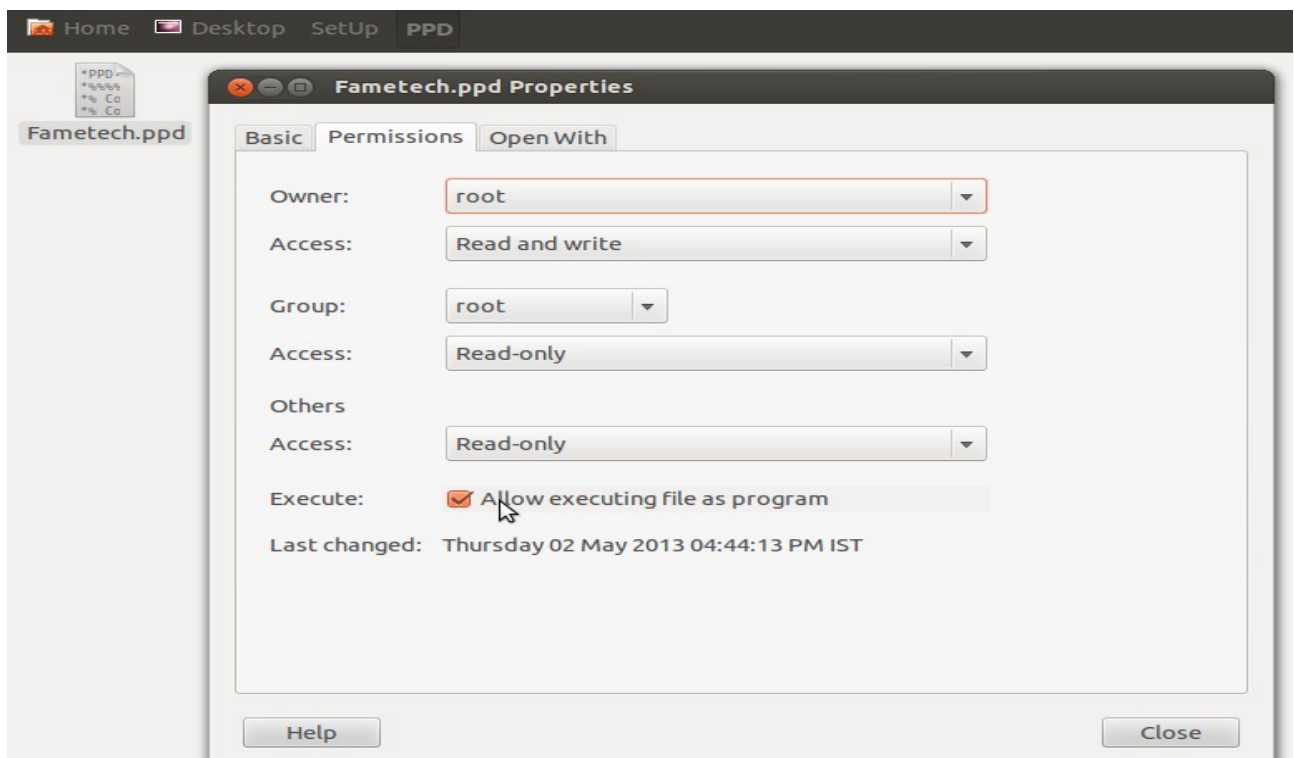
cd "/root/Documents/Setup"

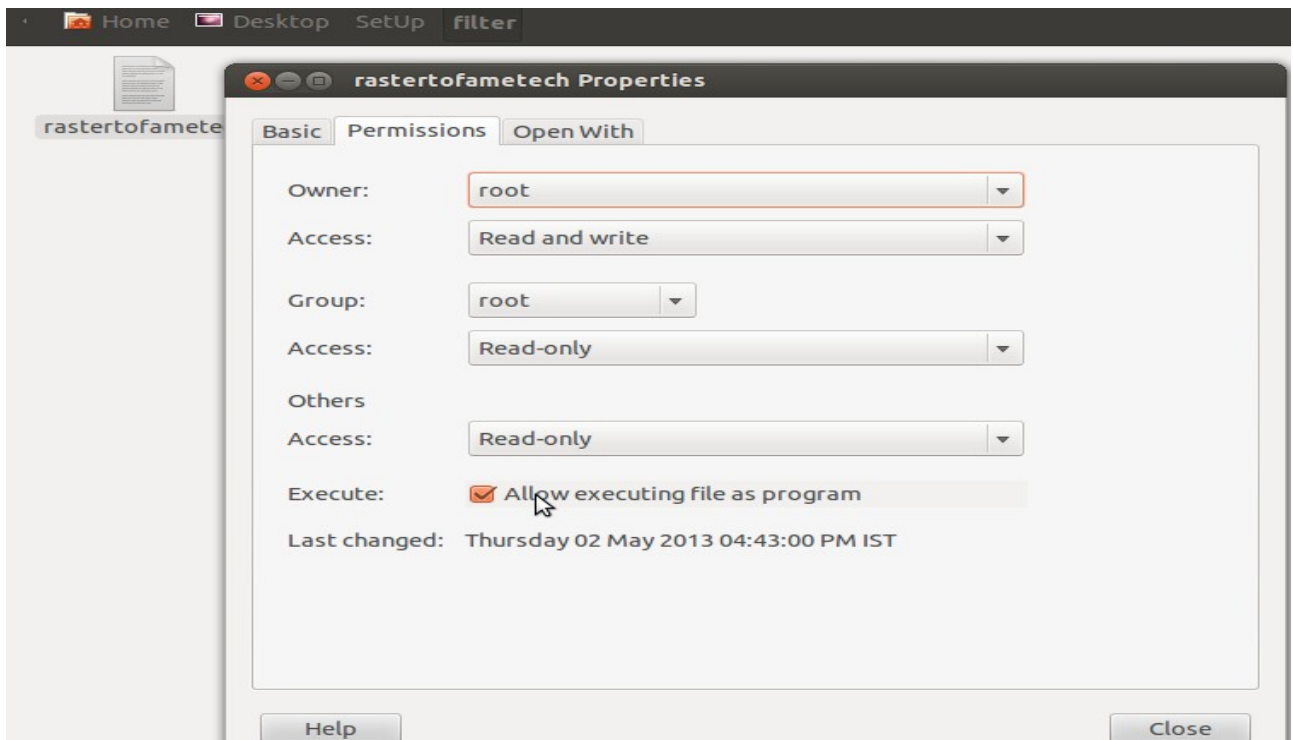
Run Setup:

./TYSSO

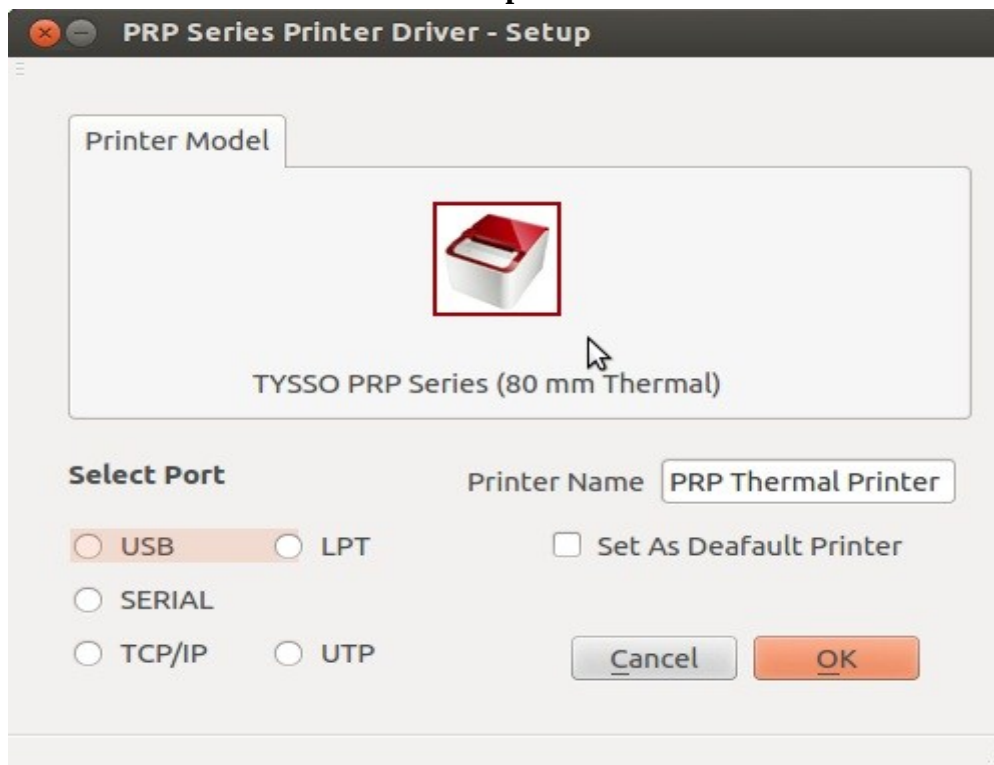
2. We must have additional , Filter and PPD Folder.

3. Set execution **permissions** of **Fametech.ppd** , **rastertofametech** filter and **TYSSO** as below.





4. Double Click on TYSSO File to execute setup.



NOTE: While executing setup if error occurred like:
error while loading shared libraries libudev.so.0
Run the following commands in terminal

- **For a 32-bit system:**
`sudo ln -sf /lib/i386-linux-gnu/libudev.so.1 /lib/i386-linux-gnu/libudev.so.0`
- **For a 64-bit system:**
`sudo ln -sf /lib/x86_64-linux-gnu/libudev.so.1 /lib/x86_64-linux-gnu/libudev.so.0`

5. **Installation Menu** will Display asking for port for installation. Following Ports are available:

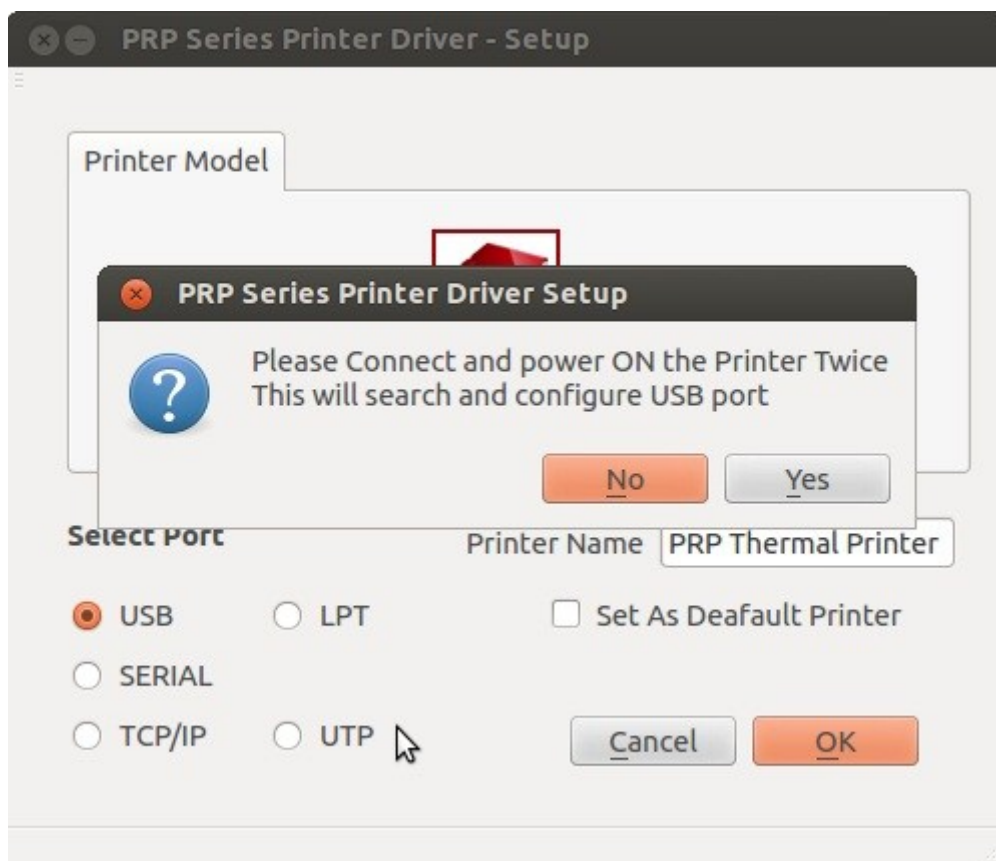
1. (i) SERIAL.
- (ii) USB.
- (iii) TCP/IP.
- (iv) LPT.
- (v) UTP.

NOTE: Select your Port from the given List.

2. Enter **Printer Name** in the given box by default name is **PRP Thermal Printer**.

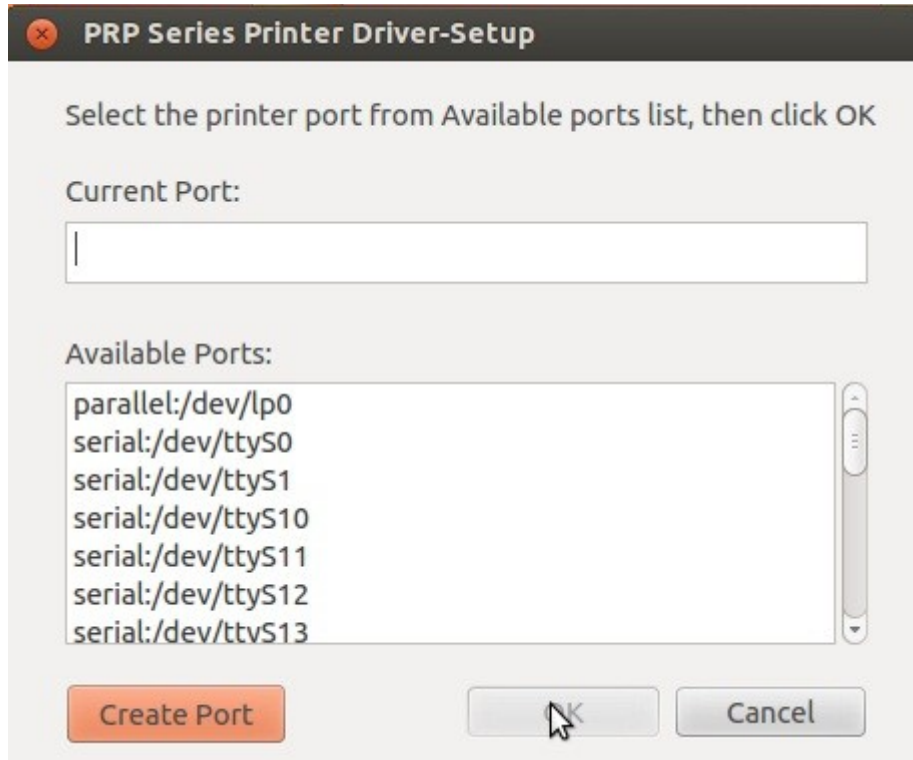
3. Check Box to set printer Default or Not.

6.

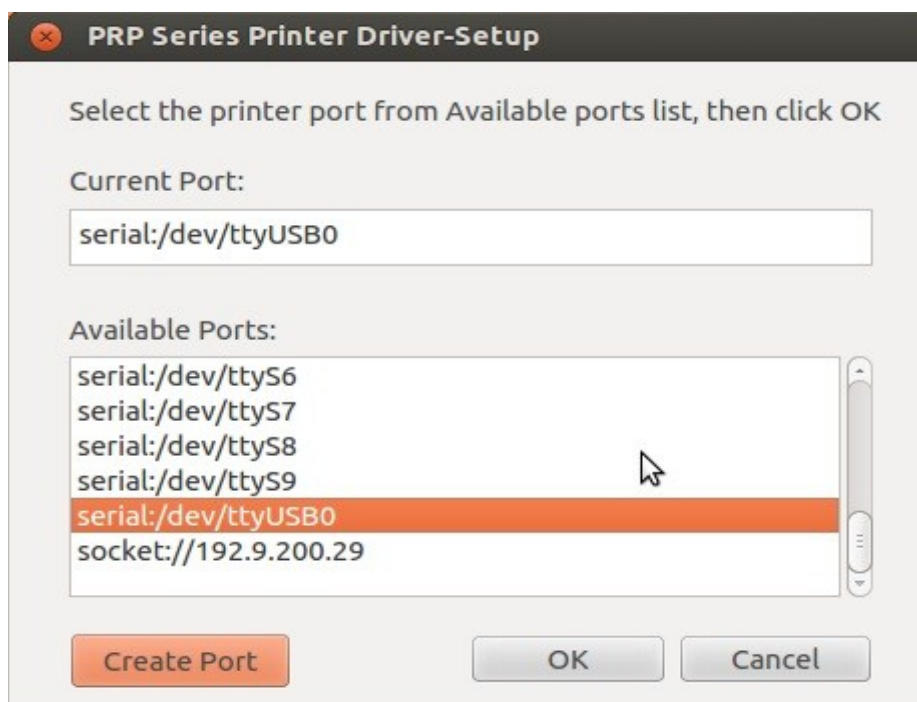


When USB Port is selected Please power ON the printer twice, it will configure USB port.

7.

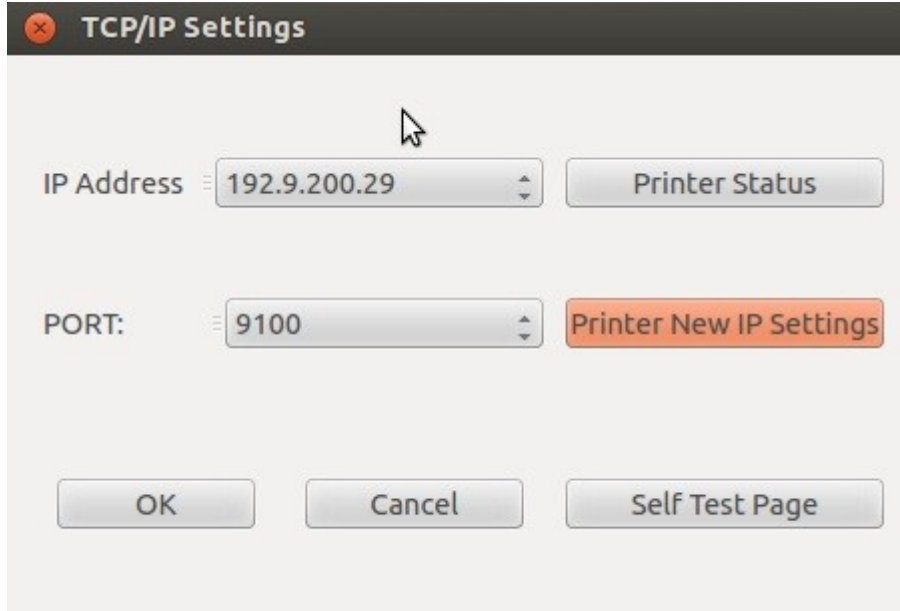


The Next window will show all the available ports. Selected port will be displayed in current port section and Ok button will be enabled as shown in figure below:

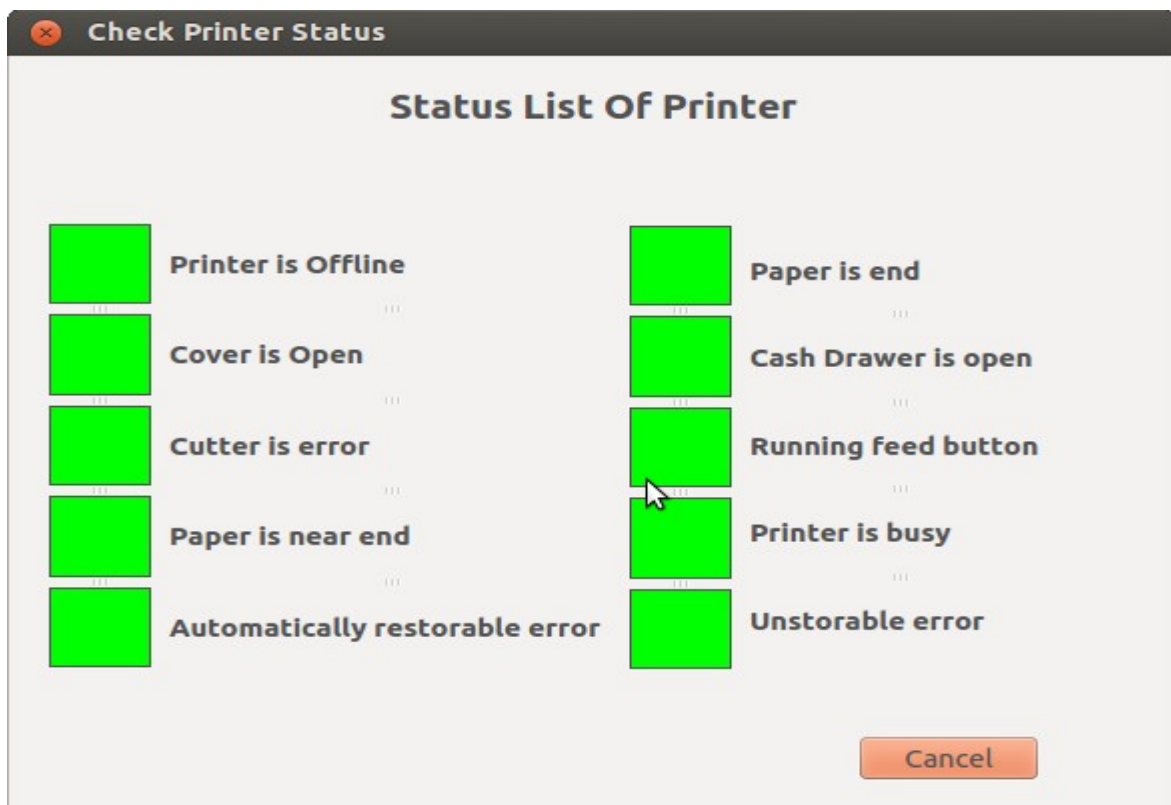


Click on Ok button to install Printer.

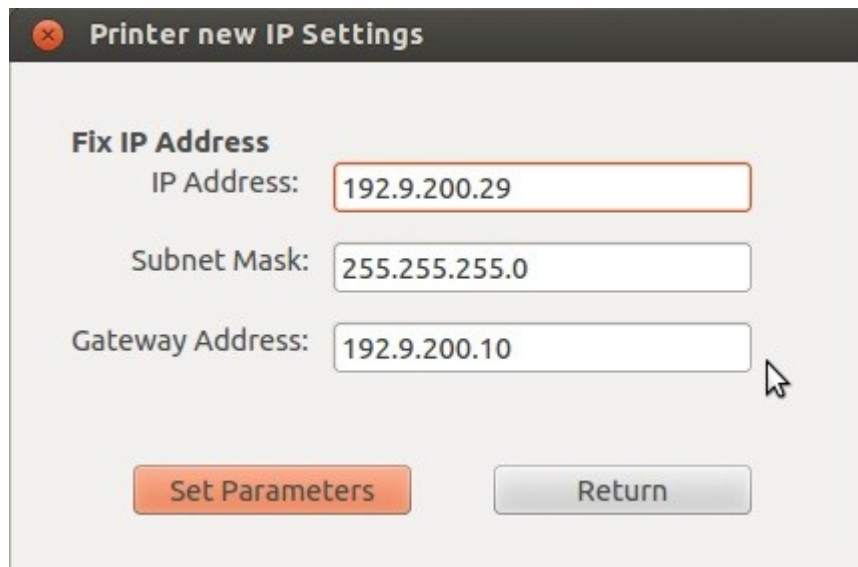
8. **Create Port** provide option to create a new TCP/IP port. The window shown below will display.



9. To Print **Test Page**, Select IP Address from Drop Down list and click on Self Test Page button.
10. To check the printer Status click on Printer Status Button. Red signal signifies the corresponding error.



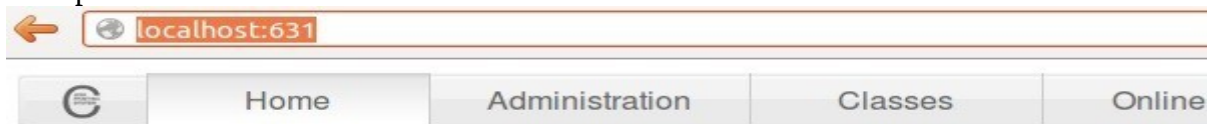
11. Click on Printer New IP Settings to change the IP.



A dialog box titled "Printer new IP Settings" with a close button (X) in the top left corner. It contains three input fields: "IP Address" with the value "192.9.200.29", "Subnet Mask" with the value "255.255.255.0", and "Gateway Address" with the value "192.9.200.10". At the bottom, there are two buttons: "Set Parameters" (orange) and "Return" (grey). A mouse cursor is pointing at the "Gateway Address" field.

Enter the new IP or anything else we want to change then click on **Set Parameters** Button. To return without changes click on **Return** Button.

12. CUPS installation is also possible using <http://localhost:631> click or copy the URL for more options.



CUPS 1.5.0

CUPS is the standards-based, open source printing system developed by Apple and other systems.

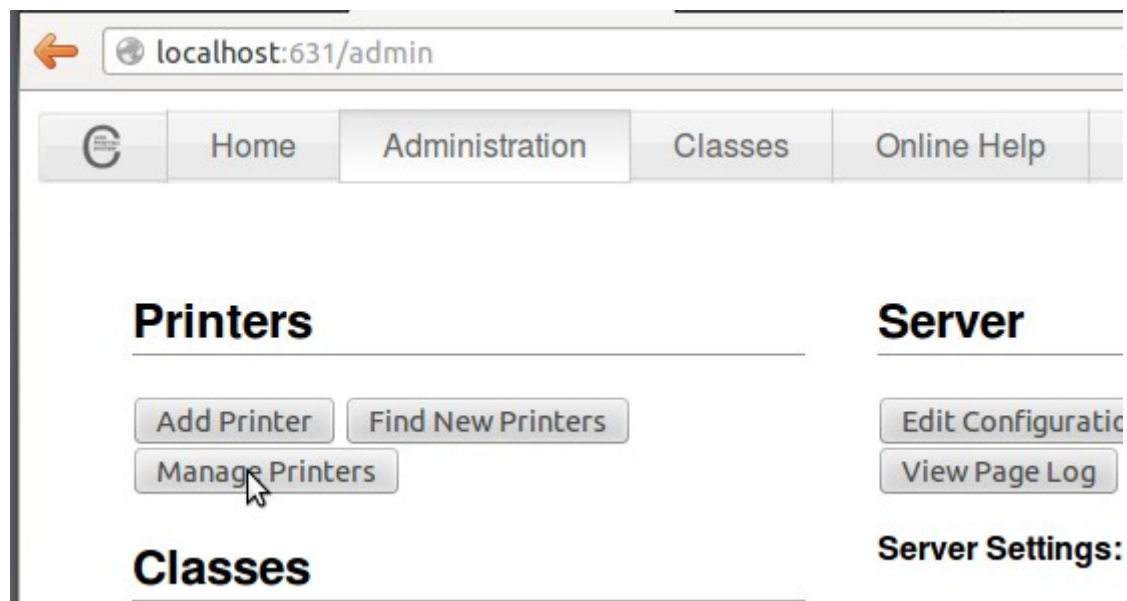
CUPS for Users

- Overview of CUPS
- Command-Line Printing and Options
- What's New in CUPS 1.4

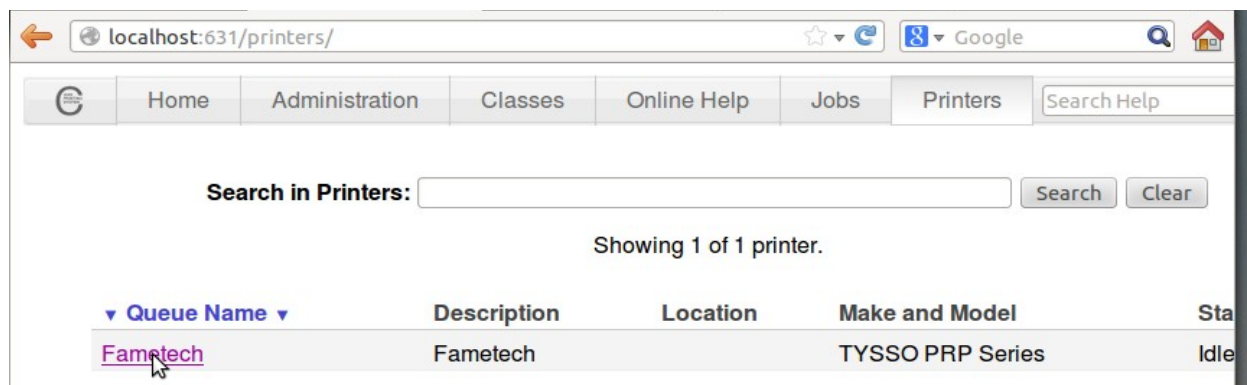
CUPS for Administrators

- Adding Printers and Classes
- Managing Operation Policies
- Printer Accounting Basics

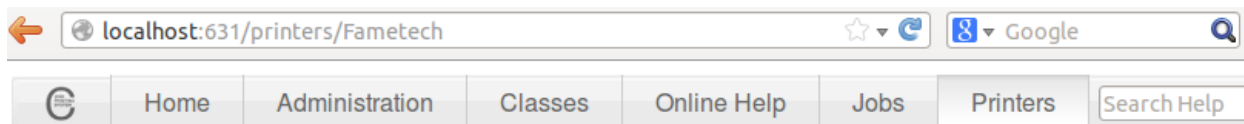
13. Click on "Administration" -> "Manage Printers".



14. Select your printer.



15. Click on “Maintenance” and click on “Print Test Page” for Test Page.



Fametechn (Idle, Accepting Jobs, Not Shared)

Maintenance Administration

Description: Fametechn

Location:

Driver: TYSSO PRP Series (grayscale, 2-sided printing)

Connection: serial:/dev/ttyS0?baud=9600+bits=8+parity=none+flow=soft

Defaults: job-sheets=none, none media=custom_79.73x149.93mm_79.73x149.93mm sides=one-sided

Set Printer Options - CUPS 1.5.0

localhost:631/admin/

Home Administration Classes Online Help Jobs Print

Set Default Options for Fametech

[General](#) [Banners](#) [Policies](#)

General

Media Size: Custom

Width:

Height:

Units: Millimeters

Set Default Options

16. Click on “**Administartion**” then on “**Set Default Options**” and fill the width and Height of page in particular field after select **custom** from **Media Size**.

NOTE: Maximum size of width is 80 mm and Height is 2000 mm in custom option.

17. In **Paper Type** option there are two sub options.
 - (i) **Variable Length:** select this option when paper length required according to entered data.
 - (ii) **Fixed Length:** In this option paper length will be according to paper size.
18. From **Cut Options** select required **CutterMode**.
There are six suboptions (Page/Job).
 - (i) **No cut/ No cut :** In this option there will be no cut paper.
 - (ii) **No cut/ Partial cut:** In this option no cut according to page but there will be a partial cut after job completed.
 - (iii) **Partial cut/Partial cut:** In this option partial cut after every page and there will be a Partial cut after job completed.
19. Click on “**Administartion**” then on “**Delete Printer**” to delete the printer.